

2 Badger Wood

2 Badger Wood provides accessible single storey three-bedroom accommodation.

This lodge consists of three bedrooms and sleeps six persons. The makeup of the lodge is one double room with TV, one standard twin room and one twin room which includes a standard single bed with an adjustable bed.

Emergency alarms are audible throughout the lodge but are not connected to a central location.

Parking

Designated accessible parking is provided in front of the lodge for one vehicle.



Access

There is access for guests using wheelchairs throughout the accommodation, the door to the entrance of the lodge is 90 cm and the chain height is 140 cm.

This includes access into the other bedrooms although there is limited manoeuvring space once in the non-adapted bedrooms.

Access to the patio from the living area has a door opening of 70 cm. The patio can also be accessed via the adapted bedroom door which has an opening of 90 cm and has a push bar handle.



Living area

There is seating for all occupants of the lodge in the lounge area. In addition, a high seated firm chair is available within the accommodation. There is space within the lounge area for a wheelchair.

The dining table provides sufficient knee space for a guest using a wheelchair and is located behind the lounge area.



Kitchen

The hob is located above the oven. The oven is electric and has a side opening door. There is a work surface at a height of 75 cm. The free-standing microwave, toaster and kettle are on this work surface to assist with access. There are sufficient floor-based cupboards to provide accessible storage. You may need to move what you decide is needed into these cupboards to provide accessible storage. However, there are also wall mounted cupboards which are not accessible from a wheelchair. The tap for the sink is on the nearest side for the user. The fridge is at a lower level. There is work surface height sockets. The kitchen turning circle is approx. 233 cm x 169 cm.



Accessible bedroom

Is provided with one Bakare Volker 3080 adjustable bed there is space beneath the adjustable bed to allow a hoist to be used at the bed. A portable hoist is **not** provided within the accommodation. If one is required Center Parcs will arrange for the hire of a hoist at no extra cost, please contact us in advance of your stay to make arrangements. The bed transfer can be from the left or the right-hand side.

The bedroom door opening is 90 cm. There is a TV in this room and a small bedside table next to the bed which measures 60 cm from the floor.

The wardrobe has a lower rail at 92 cm or an alternative rail at 144 cm from the ground.



En-suite adapted bathroom

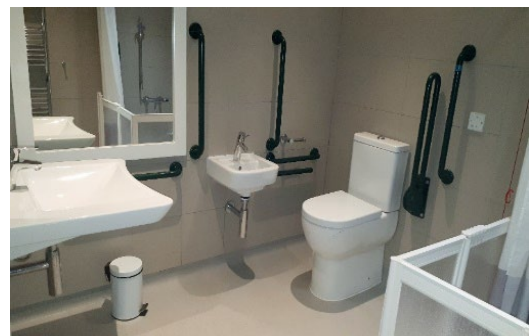
The accessible en-suite bathroom provides an accessible shower and flip down seat which is at the height of 45 cm, hand basin and toilet.

The toilet is right hand transfer. The toilet seat height is 49 cm the distance between the toilet and the sink is 21 cm, the hand basin height is 71 cm and the sink height is 82 cm. The shower transfer is from the left or the right-hand side. The shower head height can be adjusted.

An emergency pull cord is accessible from the toilet and the shower.



The turning circle in the bathroom is approx. 240 cm x 218 cm.



8 Badger Wood

8 Badger Wood provides accessible single storey three-bedroom accommodation.

This lodge consists of three bedrooms and sleeps six persons. The makeup of the lodge is one double room with TV, one standard twin room and one twin room which includes a standard single bed with an adjustable bed.

Emergency alarms are audible throughout the lodge but are not connected to a central location.

Parking

Designated accessible parking is provided in front of the lodge for one vehicle.



Access

There is access for guests using wheelchairs throughout the accommodation, the door to the entrance of the lodge is 90 cm and the chain height is 163 cm.

This includes access into the other bedrooms although there is limited manoeuvring space once in the non-adapted bedrooms.

The access to the patio is flat and the patio door is a double door with an opening of 167 cm.

Living area

There is seating for all occupants of the lodge in the lounge area. In addition, a high seated firm chair is available within the accommodation. The gap between the sofa and the wall is approx. 118 cm wide and there is space within the lounge area for a wheelchair.

The dining table has an adapted position that provides sufficient knee space for a guest using a wheelchair and is located behind the lounge area.



Kitchen

The hob is located above the oven. The oven is electric and has a side opening door. There is a work surface at a height of 75 cm. The free-standing microwave, toaster and kettle are on this work surface to assist with access. There are sufficient floor-based cupboards to provide accessible storage. You may need to move what you decide is needed into these cupboards to provide accessible storage. However, there are also wall mounted cupboards which are not accessible from a wheelchair. The tap for the sink is on the nearest side for the user. The fridge is at a lower level. There is work surface height sockets. The kitchen turning circle is approx. 237 cm x 167 cm.



Accessible bedroom

Is provided with one Bakare Volker 3080 adjustable bed there is space beneath the adjustable bed to allow a hoist to be used at the bed. A portable hoist is **not** provided within the accommodation. If one is required Center Parcs will arrange for the hire of a hoist at no extra cost, please contact us in advance of your stay to make arrangements. The bed transfer can be from the left- or right-hand side.

The bedroom door opening is 90 cm. There is a TV in this room and a small bedside table next to the bed which measures 60 cm from the floor.

The wardrobe has a lower rail at 88 cm or an alternative rail at 144 cm from the ground.

The emergency door from the bedroom is 90 cm and is opened by a push handle.



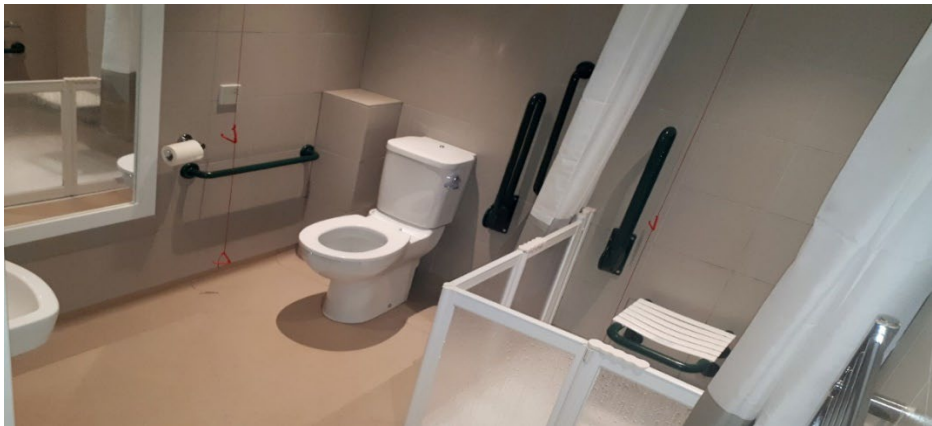
En-suite adapted bathroom

The accessible en-suite bathroom provides an accessible shower and flip down seat which is at the height of 47 cm, hand basin and toilet.

The toilet is right hand transfer. The toilet seat height is 48 cm the distance between the toilet and the sink is 102 cm and the sink height is 70 cm. The shower transfer is from the left or the right-hand side. The shower head height can be adjusted.

An emergency pull cord is located next to the toilet and the shower.

The turning circle in the bathroom is approx. 225 cm x 220 cm.



17 Badger Wood

17 Badger Wood provides accessible single storey two-bedroom accommodation.

This lodge consists of two bedrooms and sleeps four persons. The makeup of the lodge is one double room with TV and one twin room which includes a standard single bed with an adjustable bed.

Emergency alarms are audible throughout the lodge but are not connected to a central location.

Parking

Designated accessible parking is provided in front of the lodge for one vehicle.

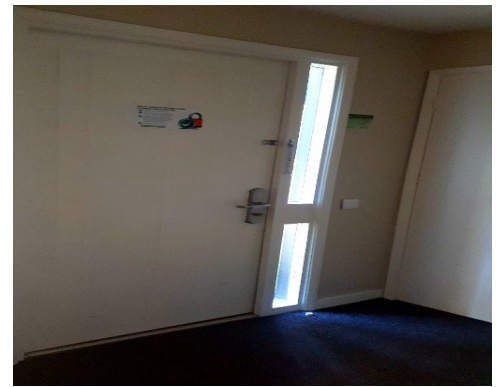


Access

There is access for guests using wheelchairs throughout the accommodation, the door to the entrance of the lodge is 90 cm and the chain height is 145 cm.

This includes access into the other bedroom although there is limited manoeuvring space once in the non-adapted bedroom.

There is a ramp to the patio via the patio door in the living area. The patio door has an opening of 70 cm.



Living area

There is seating for all occupants of the lodge in the lounge area. In addition, a high seated firm chair is available within the accommodation. The gap between the sofa and the wall is approx. 119 cm wide and there is space within the lounge area for a wheelchair.

The dining table has an adapted position that provides sufficient knee space for a guest using a wheelchair and is located behind the lounge area.



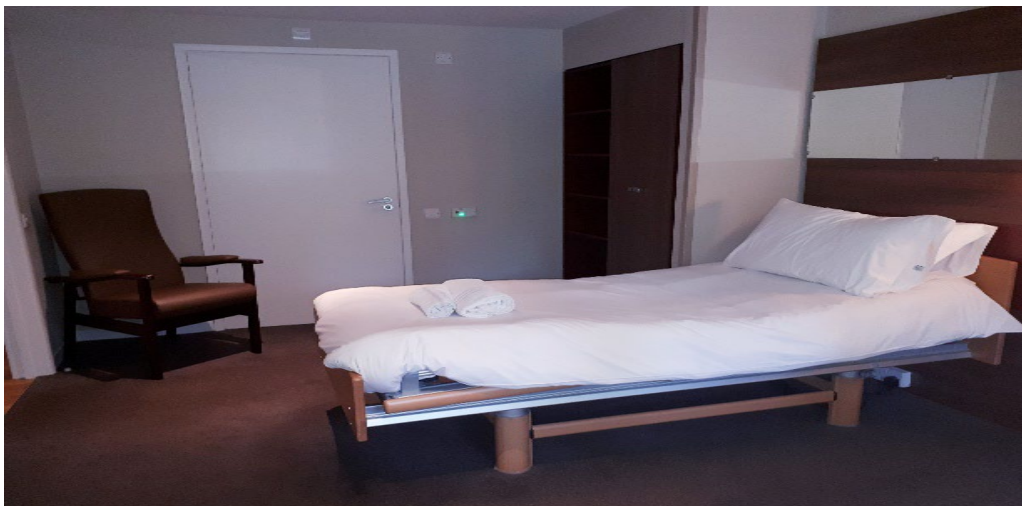
Kitchen

The hob is located above the oven. The oven is electric and has a side opening door. There is a work surface at a height of 75cm. The free-standing microwave, toaster and kettle are on this work surface to assist with access. There are sufficient floor-based cupboards to provide accessible storage. You may need to move what you decide is needed into these cupboards to provide accessible storage. However, there are also wall mounted cupboards which are not accessible from a wheelchair. The tap for the sink is on the nearest side for the user. The fridge is at a lower level. There is work surface height sockets. The kitchen turning circle is approx. 240 cm x 115 cm.



Accessible bedroom

Is provided with one Bakare Volker 3080 adjustable bed there is space beneath the adjustable bed to allow a hoist to be used at the bed. A portable hoist is **not** provided within the accommodation. If one is required Center Parcs will arrange for the hire of a hoist at no extra cost, please contact us in



advance of your stay to make arrangements. The bed transfer is from the right hand side.

The bedroom door opening is 90 cm. There is a TV in this room and a small bedside table next to the bed which measures 60 cm from the floor

The wardrobe has a lower rail at 95 cm or an alternative rail at 145 cm from the ground.



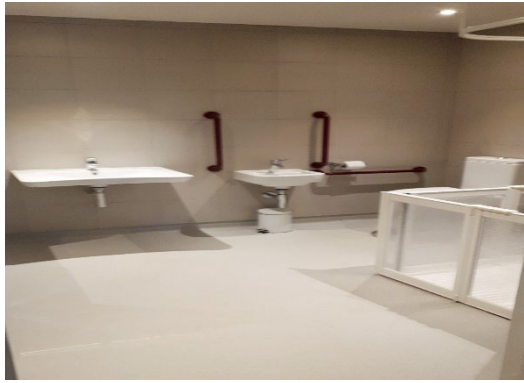
En-suite adapted bathroom

The accessible en-suite bathroom provides an accessible shower and flip down seat which is at the height of 45 cm, hand basin and toilet.

The toilet is right hand transfer. The toilet seat height is 49 cm the distance between the toilet and the sink is 34 cm. The hand wash basin is of a height of 73 cm and the wash basin is at a height of 80 cm. The shower transfer is from the left or right-hand side. The shower head height can be adjusted.

An emergency pull cord is provided and is accessible from the shower and the toilet.

The turning circle in the bathroom is approx. 188 x 146 cm.



32 Badger Wood

32 Badger Wood provides accessible single storey two-bedroom accommodation.

This lodge consists of two bedrooms and sleeps four persons. The makeup of the lodge is one double room with TV and one twin room which includes a standard single bed with an adjustable bed.

Emergency alarms are audible throughout the lodge but are not connected to a central location.

Parking

Designated accessible parking is provided in front of the lodge for one vehicle.



Access

There is access for guests using wheelchairs throughout the accommodation, the door to the entrance of the lodge is 90 cm and the chain height is 145 cm.

This includes access into the other bedroom although there is limited manoeuvring space once in the non-adapted bedroom.

There is a slight lip of 4 cm to the patio via the patio door in the living area. The patio door has a 65cm opening.



Living area

There is seating for all occupants of the lodge in the lounge area. In addition, a high seated firm chair is available within the accommodation.

The dining table has an adapted position that provides sufficient knee space for a guest using a wheelchair and is located behind the lounge area.



Kitchen

The hob is located above the oven. The oven is electric and has a side opening door. There is a work surface at a height of 75 cm. The free-standing microwave, toaster and kettle are on this work surface to assist with access. There are sufficient floor-based cupboards to provide accessible storage. You may need to move what you decide is needed into these cupboards to provide accessible storage. However, there are also wall mounted cupboards which are not accessible from a wheelchair. The tap for the sink is on the nearest side for the user. The fridge is at a lower level. There is work surface height sockets. The kitchen turning circle is approx. 244 cm x 114 cm.



Accessible bedroom

Is provided with one Bakare Volker 3080 adjustable bed there is space beneath the adjustable bed to allow a hoist to be used at the bed. A portable hoist is **not** provided within the accommodation. If one is required Center Parcs will arrange for the hire of a hoist at no extra cost, please contact us in advance of your stay to make arrangements. The bed transfer is from the right hand side.

The bedroom door opening is 90 cm. There is a TV in this room and a small bedside table next to the bed which measures 60 cm from the floor.

The wardrobe has a lower rail at 95 cm or an alternative rail at 145 cm from the ground.



En-suite adapted bathroom

The accessible en-suite bathroom provides an accessible shower and flip down seat which is at the height of 42 cm, hand basin and toilet.

The toilet is right hand transfer. The toilet seat height is 49 cm the distance between the toilet and the sink is 30 cm and the sink height is 73 cm. The shower transfer is from the left-hand side. The shower head height can be adjusted.

An emergency pull cord is provided and is accessible from the shower and the toilet.

The turning circle in the bathroom is approx. 143x175 cm.

