

13 Beechwood

13 Beechwood provides accessible single storey exclusive accommodation with three bedrooms.

The makeup of this lodge provides one fully accessible bedroom & bathroom, accessible living accommodation and kitchen, one standard double with TV and en-suite bathroom and one standard twin room with TV and en-suite shower room.

Emergency alarms are audible throughout the lodge but are not connected to a central location.

The facilities provided are sufficient for six adults.

Parking

Designated accessible parking is provided in front of the lodge for one vehicle.



Access

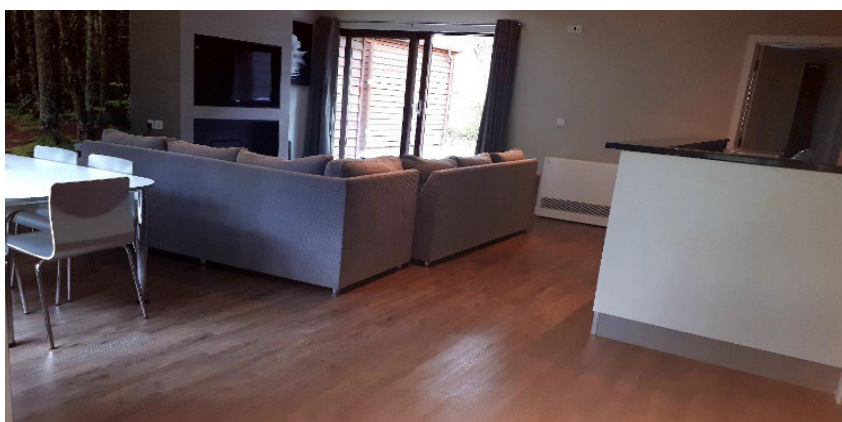
There is access for guests using wheelchairs throughout the accommodation, the door to the entrance of the lodge is 90 cm and the chain height is 116 cm.

There is lip of 4 cm to access the patio via the living area and the door width is 84cm.

Living area

There is seating for six in the lounge area. There is also space within the lounge area for a person using a wheelchair to remain seated in their wheelchair. Also available is a high seated firm chair within the accommodation. The gap between the sofa and the wall is approx. 81 cm wide.

The dining table provides sufficient knee space for a guest using a wheelchair and is located behind the lounge area.



Kitchen

The hob is at a standard height, the oven is electric and has a side opening door.

There is a work surface at 74cm. The free-standing microwave, toaster and kettle are on this work surface to assist with access. There are sufficient floor-based cupboards to provide accessible storage. You may need to move what you decide is needed into these cupboards to provide accessible storage. However, there are also wall mounted cupboards which are not accessible from a wheelchair. The tap for the sink is on the nearest side for the user. The fridge is at a lower level. The kitchen has a turning circle of approx. 150 cm x 180 cm.

Accessible bedroom

Is provided with one single bed and one Bakare Volker 3080 adjustable bed there is space beneath the adjustable bed to allow a hoist to be used at the bed. A portable hoist is **not** provided within the accommodation. If one is required Center Parc will arrange for the hire of a hoist at no extra cost, please contact us in advance of your stay to make arrangements. The bed transfer is from the right-hand side.

The bedroom door opening is 88 cm and the emergency door opening is also 88 cm with a chain at the height of 116 cm.

There is a TV provided in this room, and the wardrobe has a lower rail at the height of 75 cm and a higher rail at the height of 130 cm from the ground. The medical table next to the adapted bed measures 145 cm x 30 cm and the table is 74 cm from the floor.



En-suite adapted bathroom

The accessible en-suite bathroom provides an accessible shower and flip down seat which is at the height of 48 cm, hand basin and toilet.

The toilet is right hand transfer. The toilet seat height is 47 cm and the distance between the toilet and the sink is 30 cm and the sink height is 72 cm. The shower transfer can be from the right- or left-hand side. The shower head height can be adjusted and there is an emergency pull cord located next to the shower and the toilet.

The turning circle in the bathroom is approx. 165 cm x 110 cm.



Sauna and outside shower

The sauna and power shower have level access and doors which allow wheelchair entry being 75cm width. Wheelchairs with metal fitting will become sufficiently hot to burn in the sauna and steam room.

Guests should be able to transfer from their wheelchairs in order to use these facilities.

The shower control height is 98 cm and the sauna seat height is 48 cm.



14 Beechwood

14 Beechwood provides accessible single storey two-bedroom accommodation.

This lodge consists of two bedrooms and sleeps four persons. The makeup of the lodge is one double room and one twin room which includes a standard single bed with an adjustable bed.

Emergency alarms are audible throughout the lodge but are not connected to a central location.

Parking

Designated accessible parking is provided in front of the lodge for one vehicle.



Access

There is access for guests using wheelchairs throughout the accommodation, the door to the entrance of the lodge is 90cm and the chain height is 118cm.

This includes access into the other bedroom although there is limited manoeuvring space once in the non-adapted bedroom.

There is level access to the patio via the patio door in the living area. The patio door has a 77cm opening.



Living area

There is seating for all occupants of the lodge in the lounge area. In addition, a high seated firm chair is available within the accommodation. The gap between the sofa and the wall is approx. 136cm wide and there is space within the lounge area for a wheelchair.

The dining table has an adapted position that provides sufficient knee space for a guest using a wheelchair and is located behind the lounge area.



Kitchen

The hob is located above the oven. The oven is electric and has a side opening door. There is a work surface at a height of 75cm. The free-standing microwave, toaster and kettle are on this work surface to assist with access. There are sufficient floor-based cupboards to provide accessible storage. You may need to move what you decide is needed into these cupboards to provide accessible storage. However, there are also wall mounted cupboards which are not accessible from a wheelchair. The tap for the sink is on the nearest side for the user. The fridge is at a lower level. The kitchen is 155cm x 180cm.



Accessible bedroom

There is provided with one Bakare Volker 3080 adjustable bed there is space beneath the adjustable bed to allow a hoist to be used at the bed. A portable hoist is **not** provided within the accommodation. If one is required Center Parcs will arrange for the hire of a hoist at no extra cost, please contact us in advance of your stay to make arrangements. The bed transfer is from the right-hand side.

The bedroom door opening is 90cm. There is no TV in this room however there is in the double bedroom. There is a table

next to the bed which measures 145cm x 30cm. The table is 74cm from the floor.

There is a chain on the adapted bedroom emergency door at 118cm from the floor and the width of the door is 88cm.

The wardrobe has a lower rail at 75cm or an alternative rail at 130cm from the ground.



En-suite adapted bathroom

The accessible en-suite bathroom provides an accessible shower and flip down seat which is at the height of 48cm, hand basin and toilet.

The toilet is right hand transfer. The toilet seat height is 48cm the distance between the toilet and the sink is 30cm and the sink height is 74cm. The shower transfer can be from the left or the right-hand side. The shower head height can be adjusted.

An emergency pull cord is provided at the shower and the toilet.

The turning circle in the bathroom is approx. 164cm x 157cm.



18 Beechwood

18 Beechwood provides accessible single storey two-bedroom accommodation.

This lodge consists of two bedrooms and sleeps four persons. The makeup of the lodge is one double room and one twin room which includes a standard single bed with an adjustable bed.

Emergency alarms are audible throughout the lodge but are not connected to a central location.

Parking

Designated accessible parking is provided in front of the lodge for one vehicle.



Access

There is access for guests using wheelchairs throughout the accommodation, the door to the entrance of the lodge is 90cm and the chain height is 116cm.

This includes access into the other bedroom although there is limited manoeuvring space once in the non-adapted bedroom.

There is level access to the patio via the patio door in the living area. The patio door has an 80cm opening.



Living area

There is seating for all occupants of the lodge in the lounge area. In addition, a high seated firm chair is available within the accommodation. The gap between the sofa and the wall is approx. 130cm wide and there is space within the lounge area for a wheelchair.

The dining table has an adapted position that provides sufficient knee space for a guest using a wheelchair and is located behind the lounge area.



Kitchen

The hob is located above the oven. The oven is electric and has a side opening door. There is a work surface at a height of 75cm. The free-standing microwave, toaster and kettle are on this work surface to assist with access. There are sufficient floor-based cupboards to provide accessible storage. You may

need to move what you decide is needed into these cupboards to provide accessible storage. However, there are also wall mounted cupboards which are not accessible from a wheelchair. The tap for the sink is on the nearest side for the user. The fridge is at a lower level. The kitchen is 155cm x 180cm.



Accessible bedroom

Is provided with one Bakare Volker 3080 adjustable bed there is space beneath the adjustable bed to allow a hoist to be used at the bed. A portable hoist is **not** provided within the accommodation. If one is required Center Parcs will arrange for the hire of a hoist at no extra cost, please contact us in advance of your stay to make arrangements.

The bedroom door opening is 90cm. There is no TV in this room however there is in the double bedroom. There is a table next to the bed which measures 145cm x 30cm. The table is 74cm from the floor.

There is a chain on the adapted bedroom emergency door at 116cm from the floor and the width of the door is 88cm.

The wardrobe has a lower rail at 75cm or an alternative rail at 130cm from the ground.



En-suite adapted bathroom

The accessible en-suite bathroom provides an accessible shower and flip down seat which is at the height of 48cm, hand basin and toilet.

The toilet is left hand transfer. The toilet seat height is 48cm and the distance between the toilet and the sink is 40cm and the sink height is 70cm. The shower transfer can be from the left or the right-hand side. The shower head height can be adjusted.

An emergency pull cord is provided at the shower and the toilet.

The turning circle in the bathroom is approx. 162cm x 110cm.



19 Beechwood

19 Beechwood provides accessible single storey four-bedroomed accommodation.

This lodge consists of four bedrooms and sleeps eight persons. The makeup of the lodge is two double rooms, one standard twin room and one twin room which includes a standard single bed with an adjustable bed.

Emergency alarms are audible throughout the lodge but are not connected to a central location.

Parking

Designated accessible parking is provided in front of the lodge for one vehicle.



Access

There is access for guests using wheelchairs throughout the accommodation, the door to the entrance of the lodge is 90cm and the chain height is 118cm.

This includes access into the other bedrooms although there is limited manoeuvring space once in the non-adapted bedrooms.

There is level access to the patio via the patio door in the living area. The patio door has a 75cm opening.



Living area

There is seating for all occupants of the lodge in the lounge area. In addition, a high seated firm chair is available within the accommodation. The gap between the sofa and the wall is approx. 95cm wide and there is space within the lounge area for a wheelchair.

The dining table has an adapted position that provides sufficient knee space for a guest using a wheelchair and is located behind the lounge area.



Kitchen

The hob is located above the oven. The oven is electric and has a side opening door. There is a work surface at a height of 74cm. The free-standing microwave, toaster and kettle are on this work surface to assist with access. There are sufficient floor-based cupboards to provide accessible storage. You may need to move what you decide is needed into these cupboards to provide accessible storage. However, there are also wall mounted cupboards which are not accessible from a wheelchair. The tap for the sink is on the nearest side for the user. The fridge is at a lower level. The kitchen is 180cm x 180cm.



Accessible bedroom

Is provided with one Bakare Volker 3082 adjustable bed there is space beneath the adjustable bed to allow a hoist to be used at the bed. A portable hoist is **not** provided within the accommodation. If one is required Center Parcs will arrange for the hire of a hoist at no extra cost, please contact us in advance of your stay to make arrangements.

The bedroom door opening is 90cm. There is no TV in this room however there is in one of the double bedrooms. There is a table next to the bed which measures 145cm x 30cm. The table is 74cm from the floor.

There is a chain on the adapted bedroom emergency door at 116cm from the floor and the width of the door is 90cm.

The wardrobe has a lower rail at 75cm or an alternative rail at 130cm from the ground.



En-suite adapted bathroom

The accessible en-suite bathroom provides an accessible shower and flip down seat which is at the height of 47cm, hand basin and toilet.

The toilet is left hand transfer. The toilet seat height is 48cm and the distance between the toilet and the sink is 38cm and the sink height is 70cm. The shower transfer can be from the left or the right-hand side. The shower head height can be adjusted.

An emergency pull cord is provided at the shower and the toilet.

The turning circle in the bathroom is approx. 180cm x 110cm.



26 and 27 Beechwood

26 & 27 Beechwood provide accessible single storey three-bedroomed accommodation.

This lodge consists of three bedrooms and sleeps six persons. The makeup of the lodge is one double room, one standard twin and one twin room which includes a standard single bed with an adjustable bed.

Emergency alarms are audible throughout the lodge but are not connected to a central location.

Parking

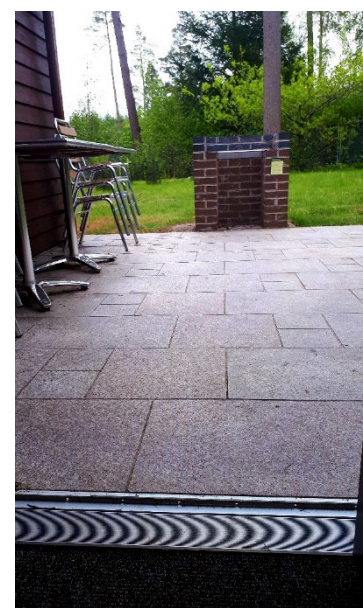
Designated accessible parking is provided in front of the lodge for one vehicle.

Access

There is access for guests using wheelchairs throughout the accommodation, the door to the entrance of the lodge is 90cm and the chain height is 116cm.

This includes access into the other bedrooms although there is limited manoeuvring space once in the non-adapted bedrooms.

There is level access to the patio via the patio door in the living area. The patio door has a 90cm opening.



Living area

There is seating for all occupants of the lodge in the lounge area. In addition, a high seated firm chair is available within the accommodation. The gap between the sofa and the wall is approx. 119cm wide and there is space within the lounge area for a wheelchair.

The dining table has an adapted position that provides sufficient knee space for a guest using a wheelchair and is located behind the lounge area.



Kitchen

The hob is located above the oven. The oven is electric and has a side opening door. There is a work surface at a height of 74cm. The free-standing microwave, toaster and kettle are on this work surface to assist with access. There are sufficient floor-based cupboards to provide accessible storage. You may need to move what you decide is needed into these cupboards to provide accessible storage. However, there are also wall mounted cupboards which are not accessible from a wheelchair. The tap for the sink is on the nearest side for the user. The fridge is at a lower level. The kitchen is 150cm x 180cm.



Accessible bedroom

Is provided with one Bakare Volker 3080 adjustable bed there is space beneath the adjustable bed to allow a hoist to be used at the bed. A portable hoist is **not** provided within the accommodation. If one is required Center Parcs will arrange for the hire of a hoist at no extra cost, please contact us in advance of your stay to make arrangements. The bed transfer is from the left-hand side.

The bedroom door opening is 90cm. There is a TV in this room however there isn't a TV present in the standard double or standard twin bedroom. There is a table next to the bed which measures 145cm x 30cm. The table is 74cm from the floor.

There is a chain on the adapted bedroom emergency door at 116cm from the floor and the width of the door is 88cm.

The wardrobe has a lower rail at 75cm or an alternative rail at 130cm from the ground.





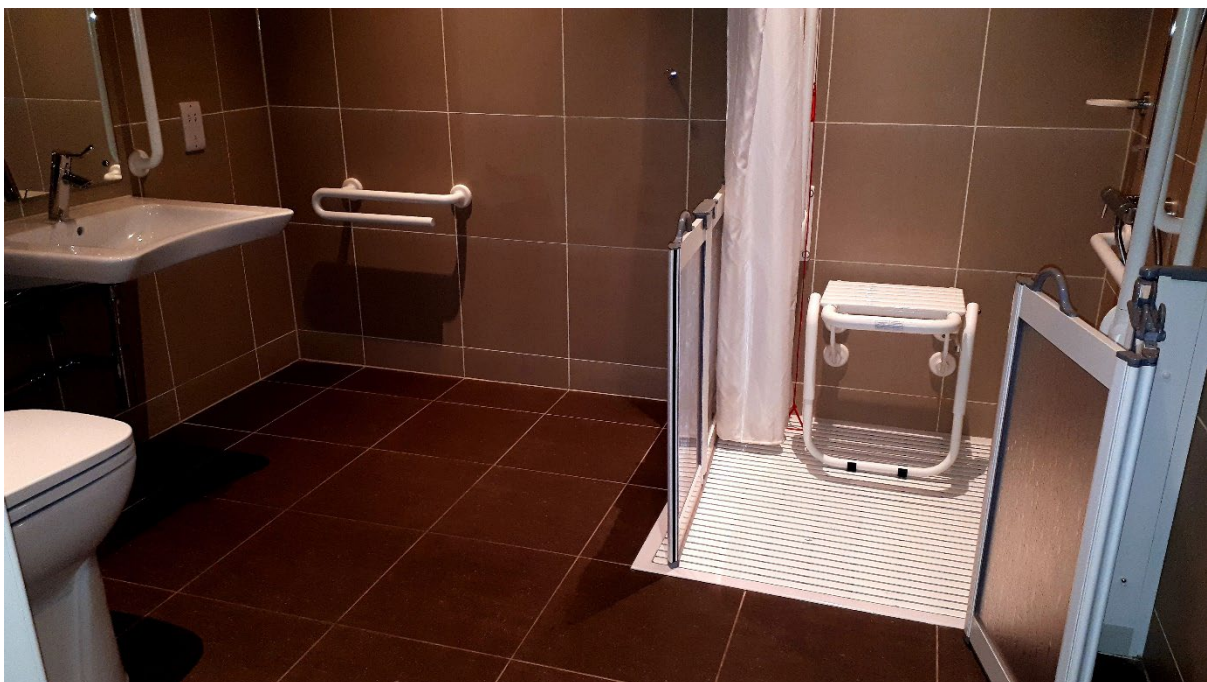
En-suite adapted bathroom

The accessible en-suite bathroom provides an accessible shower and flip down seat which is at the height of 47cm, hand basin and toilet.

The toilet is left hand transfer. The toilet seat height is 48cm the distance between the toilet and the sink is 38cm and the sink height is 71cm. The shower transfer can be from the left or the right-hand side. The shower head height can be adjusted.

An emergency pull cord is provided at the shower and the toilet.

The turning circle in the bathroom is approx. 160cm x 110cm.



71 Beechwood

71 Beechwood provides accessible single storey exclusive accommodation with three bedrooms.

The makeup of this lodge provides one fully accessible bedroom & bathroom, accessible living accommodation and kitchen, one standard double with TV and en-suite bathroom and one standard twin room with TV and en-suite shower room.

Emergency alarms are audible throughout the lodge but are not connected to a central location.

The facilities provided are sufficient for six adults.

Parking

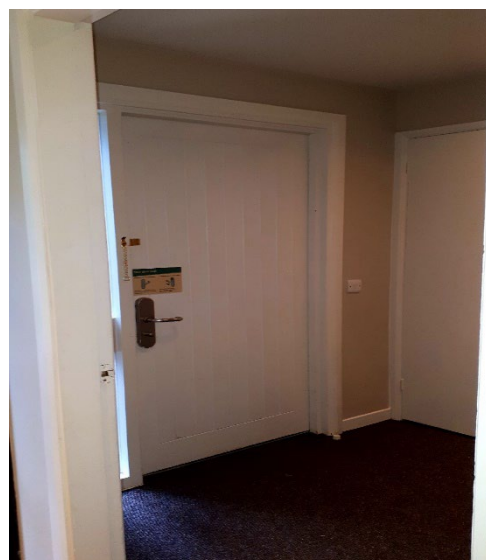
Designated accessible parking is provided in front of the lodge for one vehicle.



Access

There is access for guests using wheelchairs throughout the accommodation, the door to the entrance of the lodge is 90 cm and the chain height is 139 cm.

There is level access to the patio via the accessible bedroom.



Living area

There is seating for six in the lounge area. There is also space within the lounge area for a person using a wheelchair to remain seated in their wheelchair. Also available is a high seated firm chair within the accommodation.

The gap between the sofa and the wall is approx. 207 cm wide.

The dining table provides sufficient knee space for a guest using a wheelchair and is located behind the lounge area.



Kitchen

The hob is at a standard height, the oven is gas and has a side opening door.

There is a work surface at 75 cm. The free-standing microwave, toaster and kettle are on this work surface to assist with access. There are sufficient floor-based cupboards to provide accessible storage. You may need to move what you decide is needed into these cupboards to provide accessible storage. However, there are also wall mounted cupboards which are not accessible from a wheelchair. The tap for the sink is on the nearest side for the user. The fridge is at a lower level. The kitchen has a turning circle of approx. 135 cm x 152 cm.



Accessible bedroom

Is provided with one single bed and one Bakare Volker 3080 adjustable bed there is space beneath the adjustable bed to allow a hoist to be used at the bed. A portable hoist is **not** provided within the accommodation. If one is required Center Parcs will arrange for the hire of a hoist at no extra cost, please contact us in advance of your stay to make arrangements. The bed transfer is from either side.

The bedroom door opening, and the emergency door opening are both a width of 90 cm.

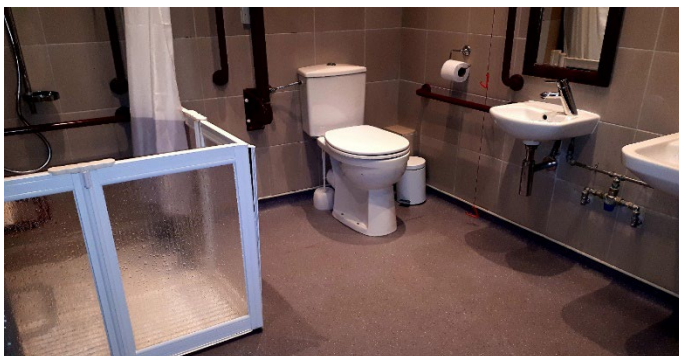
There is a TV provided in this room, and the wardrobe rail height is 104 cm. There is an emergency pull cord located by the bed



En-suite adapted bathroom

The accessible en-suite bathroom provides an accessible shower and flip down seat which is at the height of 48 cm, hand basin and toilet.

The toilet is left hand transfer. The toilet seat height is 48 cm and the distance between the toilet and the sink is 40 cm and the sink height is 72 cm. The shower transfer is from either side. The shower head height can be adjusted and there is an emergency pull cord located next to the shower and the toilet.



Sauna and outside shower

The sauna and power shower have level access and door opening of 74 cm. Wheelchairs with metal fitting will become sufficiently hot to burn in the sauna and steam room.

Guests should be able to transfer from their wheelchairs in order to use these facilities.

The shower control height is 132 cm and the sauna seat height is 62 cm.