

Contents

Adapted lodge 192	2
Adapted lodge 193	7
Adapted lodge 205	12
Adapted lodge 210	16
Adapted lodge 299	21
Adapted lodge 305	26
Adapted lodge 306	33
Adapted lodge 330	38
Adapted lodge 337	43
Adapted lodge 341	48
Adapted lodge 432	52
Adapted lodge 439	58
Adapted lodge 440	64
Adapted lodge 442	69
Adapted lodge 456	74
Adapted Hotel Room 19	80
Adapted Hotel Room 69	84
Adapted Tree House 482	87

Adapted lodge 192

This is a three-bedroom single storey Woodland lodge. The makeup of the non-adapted rooms is a double bedroom and a twin bedroom. The adapted bedroom is made up of two single beds. The front door width is 82cm. There is a chain on the front door at 178cm from the floor. This is to prevent small children leaving the lodge without the guardian / parent's knowledge.

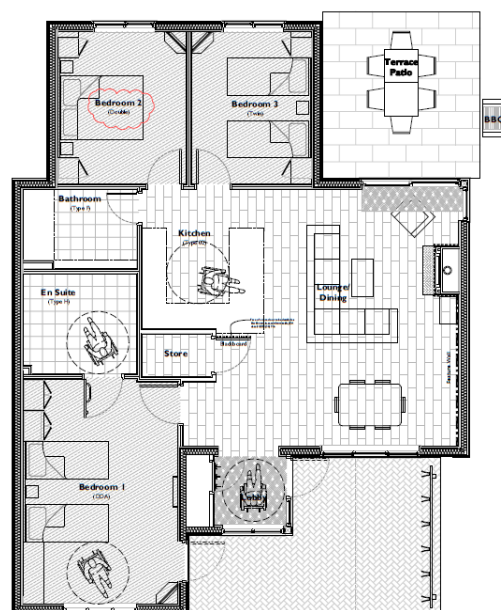
There are emergency pull cords in the adapted bed room and en-suite bath room these are local alarms and can be heard in the lodge they are not connected to a central point.

There is an external charging point outside the bedroom emergency exit.

The lodge is located close to the Plaza building. Access to the Plaza is via a steep path with a 14% decline. There is an alternative route that avoids this path. It is through the hotel reception and down the lift this would take you into the main building. There are various paths around village which have steep inclines. Please see the Around the Village tab on Access for All for further information.

Parking - Designated accessible parking is provided by the accommodation. One space per lodge. This is to assist loading and unloading. You will still be required to remove your vehicle to the car park once you have loaded your vehicle or unloaded it. As all other guests are.

Access inside the lodge - There is access for guests using wheelchairs throughout the accommodation. This includes into the other bedroom, although there is limited manoeuvring space once in the non-adapted bedroom.



Lounge

There is a raised chair to aid transfer from a wheelchair in the lounge area. This chair is also high seated and firm. The gap between the sofa and the wall to access the lounge area is approx. 112cm wide. There is level access to the patio via the patio door in the lounge area. The patio door has an 92cm opening. The patio door lip is 2mm.



Accessible Bedroom

This is provided with one Bakare Volker 3082 adjustable 914mm x 1828mm (3ft) bed. There is space beneath the bed to allow a hoist to be used at the bedside. A portable hoist is not provided within the accommodation. The bed is a right-hand transfer.

The bedroom door opening is 85cm. There is a TV in this room. There is a table next to the bed which measures 136cm x 30cm. The table is 86cm from the floor. The emergency door opening is 81cm. The chain is 180cm from the ground.

The wardrobe has a lower rail on it. It is 92cm from the ground.

An emergency alarm pull cord is present. There is also one standard single bed in this room.



En-suite Adapted Bathroom

The accessible en-suite bathroom provides accessible shower seat, wash hand basin and toilet.

The bathroom room door opening is 89cm. The toilet is a right-hand transfer. The toilet seat height is 50cm. The distance between the toilet and the sink is 40cm. The sink height is 66cm.

The distance between the sink and the shower door is 114cm. The shower transfer is to the right-hand side. The shower seat height is 49cm. The shower head height can be adjusted.

There is a shelf to allow toiletries to be placed on it. An emergency alarm pull cord is provided at the shower.



Kitchen

The hob is located above the oven, height 90cm. The oven has a side opening door. There is a work surface at a height of 72cm. The microwave and toaster are on this work surface to assist with access. There are sufficient floor-based cupboards to provide accessible storage. You may need to move what you decide is needed into these cupboards. However, there are also wall mounted cupboards which are not accessible from a wheelchair. The tap for the sink on the nearest side to the user. The fridge is at a low level. The kitchen as a whole is 160cm x 180cm.



Dining Room

The dining room is just off the lounge area. The chairs can be removed to allow access for a wheelchair user to eat at the table.



Adapted lodge 193

This is a three-bedroom single storey Woodland lodge. The makeup of the non-adapted room is a double bedroom and one twin. The adapted bedroom is made up of two single beds one of which is adapted. There is an electrical charging point at the front of the lodge.

There is a chain on the front door at 177cm from the floor. This is to prevent small children leaving the lodge without the guardian / parent's knowledge. The front door width is 84cm.

There are emergency pull cords in the adapted bedroom and en-suite bathroom these are local alarms and can be heard in the lodge they are not connected to a central point.

The lodge is located close to the Plaza building. Access to the Plaza is via a steep path with a 14% decline. There is an alternative route that avoids this path. It is through the hotel reception and down the lift this would take you into the main building. There are various paths around village which have steep inclines. Please see the Around the Village tab on Access for All for further information.

Parking - Designated accessible parking is provided by the accommodation. One space per lodge. This is to assist loading and unloading. You will still be required to remove your vehicle to the car park once you have loaded your vehicle or unloaded it. As all other guests are.

Access inside the lodge - There is access for guests using wheelchairs throughout the accommodation. This includes into the other bedrooms, although there is limited manoeuvring space once in the non-adapted bedroom.

Lounge

There is a raised chair to aid transfer from a wheelchair in the lounge area. This chair is also high seated and firm. The gap between the sofa and the wall to access the lounge area is approx. 83cm wide. There is level access to the patio via the patio door in the lounge area. The patio door has an 94cm opening. The lip of the door is 1.5mm.



Accessible Bedroom

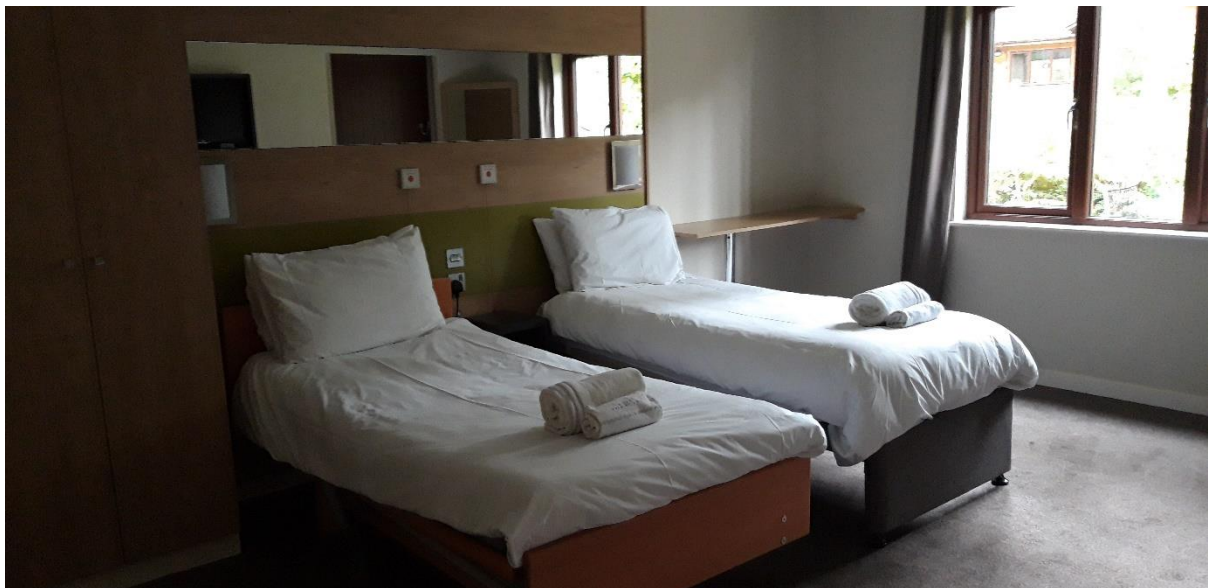
This is provided with one Bakare Volker 3082 adjustable 914mm x 1828mm (3ft) bed. There is space beneath the bed to allow a hoist to be used at the bedside. A portable hoist is not provided within the accommodation. The transfer is the left-hand side.

The bedroom door opening is 90cm. The emergency door opening is 83cm. The chain height is 149cm. There is a TV in this room. There is a table next to the bed which measures 144cm x 40cm. The table is 86cm from the floor.

The wardrobe has a lower rail on it. It is 145cm from the ground.

An emergency alarm pull cord is present. There is also one standard single bed in this room.

The safe is in the room in the bottom of the wardrobe.



En-suite Adapted Bathroom

The accessible en-suite bathroom provides accessible shower seat, wash hand basin and toilet. The door opening is 09cm.

The toilet is a right-hand transfer. The toilet seat height is 50cm. The toilet seat is blue to aid those with visual impairment. The distance between the toilet and the sink is 60cm. The sink height is 66cm.

The shower transfer is to the right-hand side. The shower seat height is 43cm. The shower head height can be adjusted. There is a shelf to allow toiletries to be placed on it. An emergency alarm pull cord is provided at the shower.

The turning circle is 160cm x 120cm.



Kitchen

The walkway from the living space to the kitchen is 85cm. The hob is located above the oven, it is 90cm from the ground. The oven has a side opening door. There is a work surface at a height of 72cm. The microwave toaster and kettle are on this work surface to assist with access. There are sufficient floor based cupboards to provide accessible storage. You may need to move what you decide is needed into these cupboards. However there are also wall mounted cupboards which are not accessible from a wheelchair. The tap for the sink on the

nearest side to the user. The fridge is at a low level. The kitchen as a whole is 163cm x 185cm.



Dining Room

The dining room is just off the lounge area. The chairs can be removed to allow access for a wheelchair user to eat at the table.



Adapted lodge 205

This is a three-bedroom single storey Woodland Dog lodge. The makeup of the non-adapted room is a double bed and a twin. The adapted bedroom is made up of two single beds. There is a chain on the front door at 177cm from the floor. This is to prevent small children leaving the lodge without the guardian / parent's knowledge. The front door width is 84cm.

There is an external electrical charging point under the dining room window.

There are emergency pull cords in the adapted bedroom and en-suite bath room these are local alarms and can be heard in the lodge they are not connected to a central point.

The lodge is located close to the Plaza building. Access to the Plaza is via a steep path with a 14% decline. There is an alternative route that avoids this path. It is through the hotel reception and down the lift this would take you into the main building. There are various paths around village which have steep inclines. Please see the Around the Village tab on Access for All for further information.

Parking - Designated accessible parking is provided by the accommodation. One space per lodge. This is to assist loading and unloading. You will still be required to remove your vehicle to the car park once you have loaded your vehicle or unloaded it. As all other guests are.

Access inside the lodge - There is access for guests using wheelchairs throughout the accommodation. This includes into the other bedroom, although there is limited manoeuvring space once in the non-adapted bedroom.

Lounge

There is a raised chair to aid transfer from a wheelchair in the lounge area. This chair is also high seated and firm. The gap between the sofa and the wall to access the lounge area is

approx. 108cm wide. There is level access to the patio via the patio door in the lounge area. The patio door has an 96cm opening. The patio lip is 2mm.



Accessible Bedroom

This is provided with one Bakare Volker 3082 adjustable 914mm x 1828mm (3ft) bed. There is space beneath the bed to allow a hoist to be used at the bedside. A portable hoist is not provided within the accommodation. The bed is a left-hand transfer.

The bedroom door opening is 86cm. There is TV in this room. There is a table next to the bed which measures 146 x 40. The table is 73cm from the floor. The emergency exit door is 83cm wide. The chain 152cm is from the ground.

The wardrobe has a lower rail on it. It is 143cm from the ground. The safe is in the master bedroom.

An emergency alarm pull cord is present. There is also one standard single bed in this room.



En-suite Adapted Bathroom

The accessible en-suite bathroom provides accessible shower seat, wash hand basin and toilet. The door opening is 90cm.

The toilet is a right-hand transfer. The toilet seat height is 46cm. The toilet seat is blue to aid those with visual impairment. The distance between the toilet and the sink is 60cm. The sink height is 67cm.

The distance between the sink and the shower door is 110cm. The shower transfer is to the right-hand side. The shower seat height is 50cm. The shower head height can be adjusted. There is a shelf to allow toiletries to be placed on it. An emergency alarm pull cord is provided at the shower.



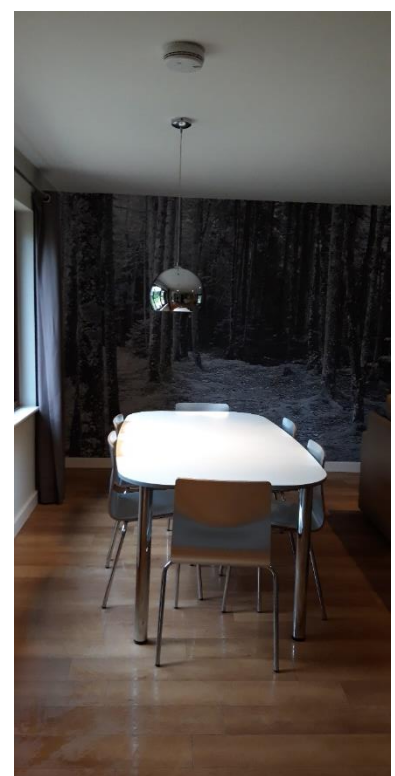
Kitchen

The hob is located above the oven, height from the floor is 90cm. The oven has a side opening door. There is a work surface at a height of 73cm. The microwave toaster and kettle are on this work surface to assist with access. There are sufficient floor-based cupboards to provide accessible storage. You may need to move what you decide is needed into these cupboards. However, there are also wall mounted cupboards which are not accessible from a wheelchair. The tap for the sink on the nearest side to the user. The fridge is at a low level. The kitchen as a whole is 158cm x 180cm. The access to the kitchen is 93cm.



Dining Room

The dining room is just off the lounge area. The chairs can be removed to allow access for a wheelchair user to eat at the table.



Adapted lodge 210

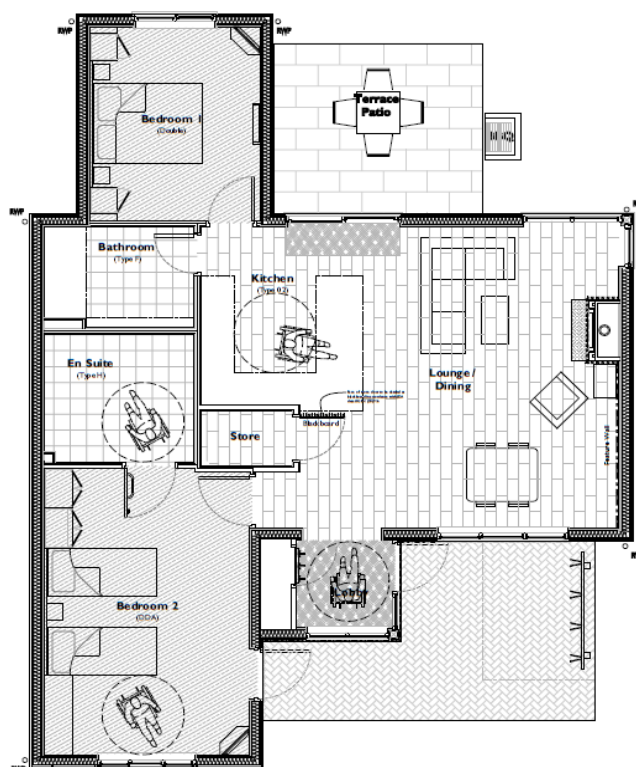
This is a two-bed single storey Woodland. The makeup of the non-adapted room is a double bed. The adapted bedroom is made up of two single beds. The front door opening is 83cm. There is a chain on the front door at 175cm from the floor. This is to prevent small children leaving the lodge without the guardian / parent's knowledge.

There are emergency pull cords in the adapted bedroom and en-suite shower room these are local alarms and can be heard in the lodge they are not connected to a central point.

The lodge is located close to the Plaza building. Access to the Plaza is via a steep path with a 14% decline. There is an alternative route that avoids this path. It is through the hotel reception and down the lift this would take you into the main building. There are various paths around village which have steep inclines. Please see the around the village tab for further information.

Parking - Designated accessible parking is provided by the accommodation. One space per lodge. This is to assist loading and unloading. You will still be required to remove your vehicle to the car park once you have loaded your vehicle or unloaded it. As all other guests are.

Access inside the lodge - There is access



DDA Furniture & Finishes Plan

0m 0.5m 1m 2.5m 1:50 at A1

for guests using wheelchairs throughout the accommodation. This includes into the other bedroom, although there is limited manoeuvring space once in the non-adapted bedroom.

Lounge

There is a raised chair to aid transfer from a wheelchair in the lounge area. This chair is also high seated and firm. The gap between the sofa and the wall to access the lounge area is approx. 136cm wide. There is level access to the patio via the patio door in the lounge area. The patio door has an opening 82cm. The patio door lip is 2mm.



Accessible Bedroom

This is provided with one Bakare Volker 3082 adjustable 914mm x 1828mm (3ft) bed. There is space beneath the bed to allow a hoist to be used at the bedside. A portable hoist is not provided within the accommodation. The bed is a left hand transfer.

The bedroom door opening is 86cm. There is an emergency door. The opening is 83cm. The chain height is 152cm. There is not TV in this room (there is in the double room this is the as all other woodland lodges). There is a table next to the bed which measures 145cm x 40cm. The table is 72cm from the floor.

The wardrobe has a lower rail on it. It is 144cm from the ground. The safe is in the master bedroom.

An emergency alarm pull cord is present. There is also one standard single bed in this room.



En-suite Adapted Bathroom

The accessible en-suite bathroom provides accessible shower seat, wash hand basin and toilet. The door width is 88cm wide.

The toilet is a right-hand transfer. The toilet seat height is 49cm. The toilet seat is blue to aid those with visual impairment. The distance between the toilet and the sink is 60cm. The sink height is 66cm.

The distance between the sink and the shower door is 110cm. The shower transfer is to the right-hand side. The shower chair is 50cm from the floor. The shower head height can be adjusted. There is a shelf to allow toiletries to be placed on it. An emergency alarm pull cord is provided at the shower.



Kitchen

The hob is located above the oven, height 90cm. The oven has a side opening door. There is a work surface at a height of 72cm. The microwave toaster and kettle are on this work surface to assist with access. There are sufficient floor-based cupboards to provide accessible storage. You may need to move what you decide is needed into these cupboards. However, there are also wall mounted cupboards which are not accessible from a wheelchair. The tap for the sink on the nearest side to the user. The fridge is at a low level. The kitchen as a whole is 180cm x 163cm.



Dining Room

The dining room is just off the lounge area. The chairs can be removed to allow access for a wheelchair user to eat at the table.

Adapted lodge 299

This is a four-bed single storey Woodland. The makeup of the non-adapted master bedroom is a double bed. There is another double room and one twin. The adapted bedroom is made up of two single beds. There is a chain on the front door at 175cm from the floor. This is to prevent small children leaving the lodge without the guardian / parent's knowledge. The front door width is 88cm.

There is a charging point by the front door.

There are emergency pull cords in the adapted bedroom and en-suite bathroom these are local alarms and can be heard in the lodge they are not connected to a central point.

The lodge is located close to the Plaza building. Access to the Plaza is via a steep path with a 14% decline. There is an alternative route that avoids this path. It is through the hotel reception and down the lift this would take you into the main building. There are various paths around village which have steep inclines. Please see the around the village tab for further information.

Parking - Designated accessible parking is provided by the accommodation. One space per lodge. This is to assist loading and unloading. You will still be required to remove your vehicle to the car park once you have loaded your vehicle or unloaded it. As all other guests are.

Access inside the lodge - There is access for guests using wheelchairs throughout the accommodation. This includes into the other bedrooms, although there is limited manoeuvring space once in the non-adapted bedrooms.

Lounge

There is a raised chair to aid transfer from a wheelchair in the lounge area. This chair is also high seated and firm. The gap between the sofa and the wall to access the lounge area is approx. 136cm wide.

There is level access to the patio via the patio door in the lounge area. The patio door has an opening of 182cm. The patio threshold lip height is 2cm.



Accessible Bedroom

This is provided with one Bakare Volker 3082 adjustable 914mm x 1828mm (3ft) bed. There is space beneath the bed to allow a hoist to be used at the bedside. A portable hoist is not provided within the accommodation. The bed is a right-hand transfer.

There is a corridor leading to the adapted bedroom that is approx. 3 meters long and 85cm wide. The turning in to the door is also 85cm.

The bedroom door opening is 85cm. There is not TV in this room (there is in the double room this is the as all other woodland lodges). The table is 74cm from the floor.

The wardrobe has a lower rail on it. It is 145cm from the ground.

The safe is in the wardrobe of the master bedroom.

An emergency alarm pull cord is present. There is also one standard single bed in this room.

The emergency door from the bedroom is 90cm wide. There is a lip of 3cm. The door chain is 150m from the ground.

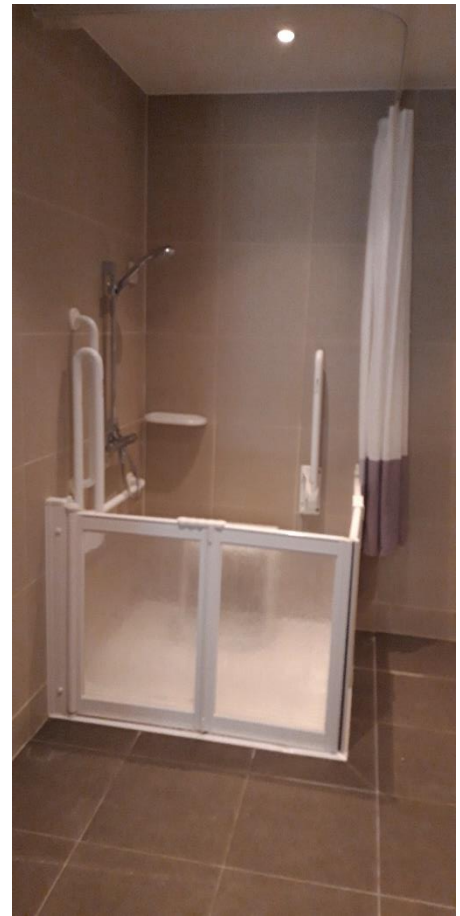


En-suite Adapted Bathroom

The accessible en-suite bathroom provides accessible shower seat, wash hand basin and toilet.

The toilet is a right-hand transfer. The toilet seat height is 49cm. The toilet seat is blue to aid those with visual impairment. The distance between the toilet and the sink is 60cm. The sink height is 66cm.

The turning circle is 134cm x 164cm. The shower transfer is to the right-hand side. The shower head height can be adjusted. There is a shelf to allow toiletries to be placed on it. An emergency alarm pull cord is provided at the shower. The shower seat height is 50cm.



Kitchen

The hob is located above the oven, height 90cm. The oven has a side opening door. There is a work surface at a height of 72cm. The microwave toaster and kettle are on this work surface to assist with access. There are sufficient floor-based cupboards to provide accessible storage. You may need to move what you decide is needed into these cupboards. However, there are also wall mounted cupboards which are not accessible from a wheelchair. The tap for the sink on the nearest side to the user. The fridge is at a low level. The kitchen as a whole is 183cm x 183cm.



Dining Room

The dining room is just off the lounge area. The chairs can be removed to allow access for a wheelchair user to eat at the table.

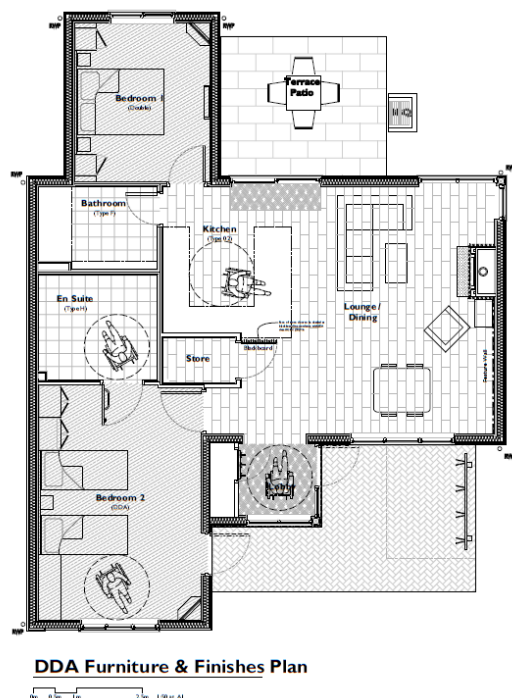


Adapted lodge 305

This is a two bed single storey Woodland Dog lodge. The makeup of the non-adapted room is a double bed. The adapted bed room is made up of two single beds. There is a chain on the front door at 175cm from the floor. This is to prevent small children leaving the lodge without the guardian / parent's knowledge. The front door width is 85cm.

There are emergency pull cords in the adapted bed room and en-suite bath room these are local alarms and can be heard in the lodge they are not connected to a central point.

The lodge is located close to the Plaza building. Access to the Plaza is via a steep path with a 14% decline. There is an alternative route that avoids this path. It is through the hotel reception and down the lift this would take you into the main building. There are various paths around village which have steep inclines. Please see the around the village tab for further information.



Parking - Designated accessible parking is provided by the accommodation. One space per lodge. This is to assist loading

and unloading. You will still be required to remove your vehicle to the car park once you have loaded your vehicle or unloaded it. As all other guests are.

Access inside the lodge - There is access for guests using wheelchairs throughout the accommodation. This includes into the other bedroom, although there is limited manoeuvring space once in the non-adapted bedroom.

Lounge

There is a raised chair to aid transfer from a wheelchair in the lounge area. This chair is also high seated and firm. The gap between the sofa and the wall to access the lounge area is approx. 115cm wide. There is level access to the patio via the patio door in the lounge area. The patio door has an 81cm opening.





Accessible Bedroom

This is provided with one Bakare Volker 3082 adjustable 914mm x 1828mm (3ft) bed. There is space beneath the bed to allow a hoist to be used at the bedside. A portable hoist is not provided within the accommodation.

The bedroom door opening is 84cm. There is not TV in this room (there is in the double room this is the as all other woodland lodges). The turning circle to the bed is approx. 160m x 150cm. There is a table next to the bed which measures 145cm x 40cm. The table is 72cm from the floor.

The wardrobe has a lower rail on it. It is 140cm from the ground.

An emergency alarm pull cord is present. There is also one standard single bed in this room.



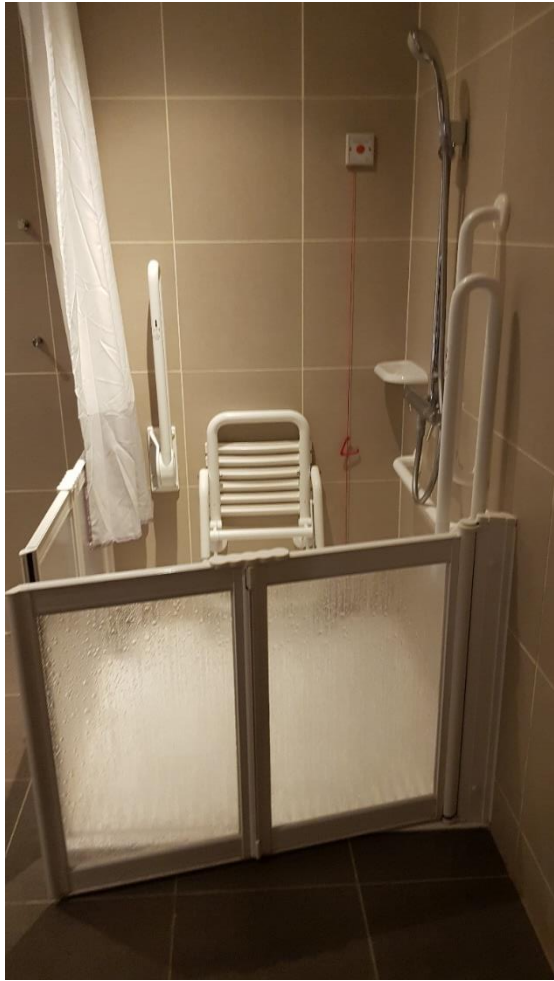
En-suite Adapted Bathroom

The accessible en-suite bathroom provides accessible shower seat, wash hand basin and toilet.

The toilet is a left hand transfer. The toilet seat height is 47cm. The toilet seat is blue to aid those with visual impairment. The distance between the toilet and the sink is 100cm. The sink height is 67cm.

The distance between the sink and the shower door is 110cm. The shower transfer is to the left hand side. The shower head height can be adjusted. There is a shelf to allow toiletries to be placed on it. An emergency alarm pull cord is provided at the shower.





Kitchen

The hob is located above the oven, height 1000mm. The oven has a side opening door. There is a work surface at a height of 75cm. The microwave toaster and kettle are on this work surface to assist with access. There are sufficient floor based cupboards to provide accessible storage. You may need to move what you decide is needed into these cupboards. However there are also wall mounted cupboards which are not accessible from a wheelchair. The tap for the sink on the nearest side to the user. The fridge is at a low level. The kitchen as a whole is 155cm x 190cm.



Dining Room

The dining room is just off the lounge area. The chairs can be removed to allow access for a wheelchair user to eat at the table.



Adapted lodge 306

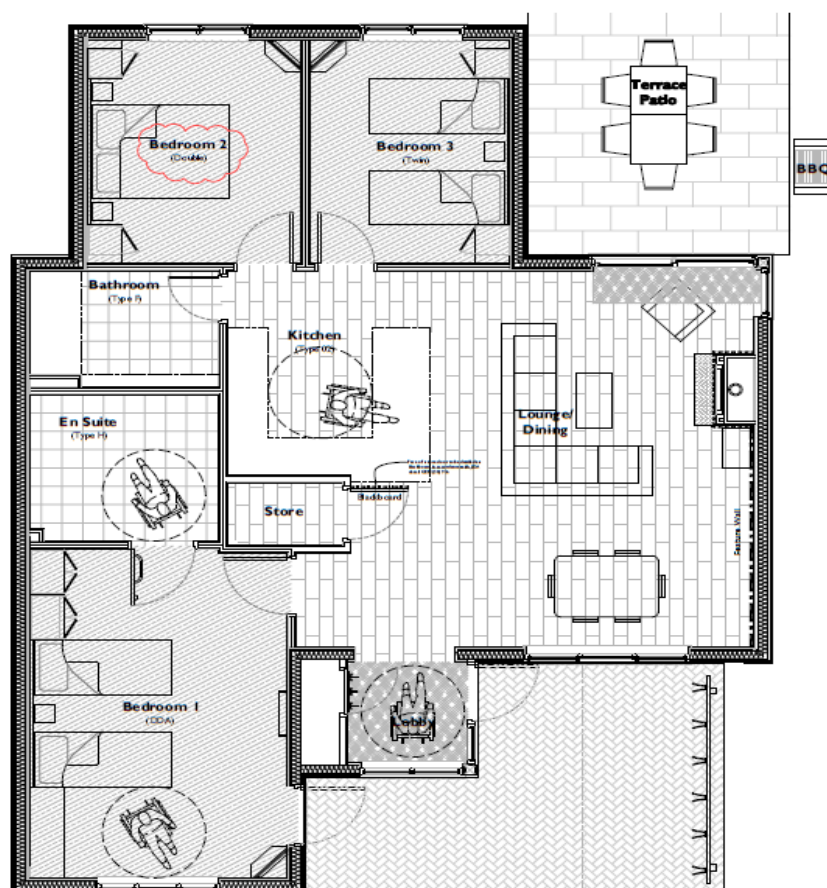
This is a three-bed single storey Woodland. The makeup of the non-adapted rooms are a double bedroom and a twin bedroom. The adapted bedroom is made up of two single beds.

The front door width is 82cm. There is a chain on the front door at 175cm from the floor. This is to prevent small children leaving the lodge without the guardian / parent's knowledge.

There is an external charging point by the emergency door to the adapted room.

There are emergency pull cords in the adapted bed room and en-suite bath room these are local alarms and can be heard in the lodge they are not connected to a central point.

The lodge is located close to the Plaza building. Access to the Plaza is via a steep path with a 14% decline. There is an alternative route that avoids this path. It is through the hotel reception and down the lift this would take you into the main building. There are various paths around village which have steep inclines. Please see the Around the Village tab on Access for All for further information.



Parking - Designated accessible parking is provided by the accommodation. One space per lodge. This is to assist loading and unloading. You will still be required to remove your vehicle to the car park once you have loaded your vehicle or unloaded it. As all other guests are.

Access inside the lodge - There is access for guests using wheelchairs throughout the accommodation. This includes into the other bedroom, although there is limited manoeuvring space once in the non-adapted bedroom.

Lounge

There is a raised chair to aid transfer from a wheelchair in the lounge area. This chair is also high seated and firm. The gap between the sofa and the wall to access the lounge area is approx. 85cm wide. There is level access to the patio via the patio door in the lounge area. The patio door has an 91cm opening. The lip of the patio door is 2mm.





Accessible Bedroom

This is provided with one Bakare Volker 3082 adjustable 914mm x 1828mm (3ft) bed. There is space beneath the bed to allow a hoist to be used at the bedside. A portable hoist is not provided within the accommodation.

The bedroom door opening is 84cm. There is a TV in this. There is a table next to the bed which measures 135cm x 30cm. The table is 87cm from the floor.

There is an emergency escape door which is 82cm wide. The chain for this door is 173cm from the floor.

The wardrobe has a lower rail on it. It is 147cm from the ground.

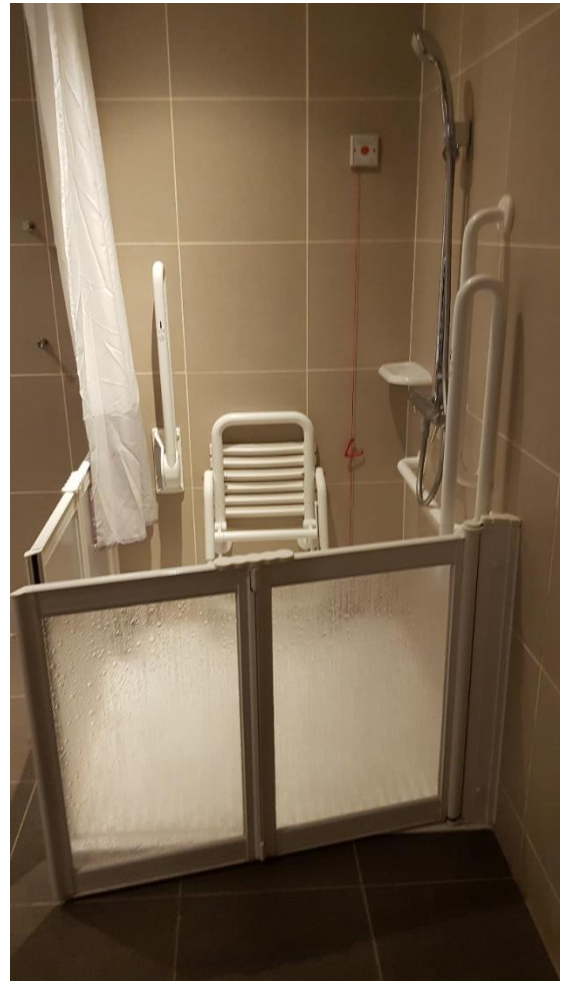
An emergency alarm pull cord is present. There is also one standard single bed in this room.

En-suite Adapted Bathroom

The accessible en-suite bathroom provides accessible shower seat, wash hand basin and toilet. The bathroom door is 87cm wide.

The toilet is a left-hand transfer. The toilet seat height is 49cm. The distance between the toilet and the sink is 40cm. The sink height is 66cm.

The distance between the sink and the shower door is 110cm. The shower transfer is to the left-hand side. The shower seat height is 47cm. The shower head height can be adjusted. There is a shelf to allow toiletries to be placed on it. An emergency alarm pull cord is provided at the shower.



Kitchen

The hob is located above the oven, height 90cm. The oven has a side opening door. There is a work surface at a height of

72cm. The microwave and toaster are on this work surface to assist with access. There are sufficient floor based cupboards to provide accessible storage. You may need to move what you decide is needed into these cupboards. However there are also wall mounted cupboards which are not accessible from a wheelchair. The tap for the sink on the nearest side to the user. The fridge is at a low level. The kitchen as a whole is 190cm x 160cm.



Dining Room

The dining room is just off the lounge area. The chairs can be removed to allow access for a wheelchair user to eat at the table.



Adapted lodge 330

This is a three-bed single storey Executive Lodge. The makeup of the non-adapted room is a double bed. The adapted bedroom is made up of two single beds. The front door width is 85cm. There is a chain on the front door at 177cm from the floor. This is to prevent small children leaving the lodge without the guardian / parent's knowledge.

There are emergency pull cords in the adapted bedroom and en-suite bathroom these are local alarms and can be heard in the lodge they are not connected to a central point.

There are various paths around village which have steep inclines. Please see the Around the Village tab on Access for All for further information.

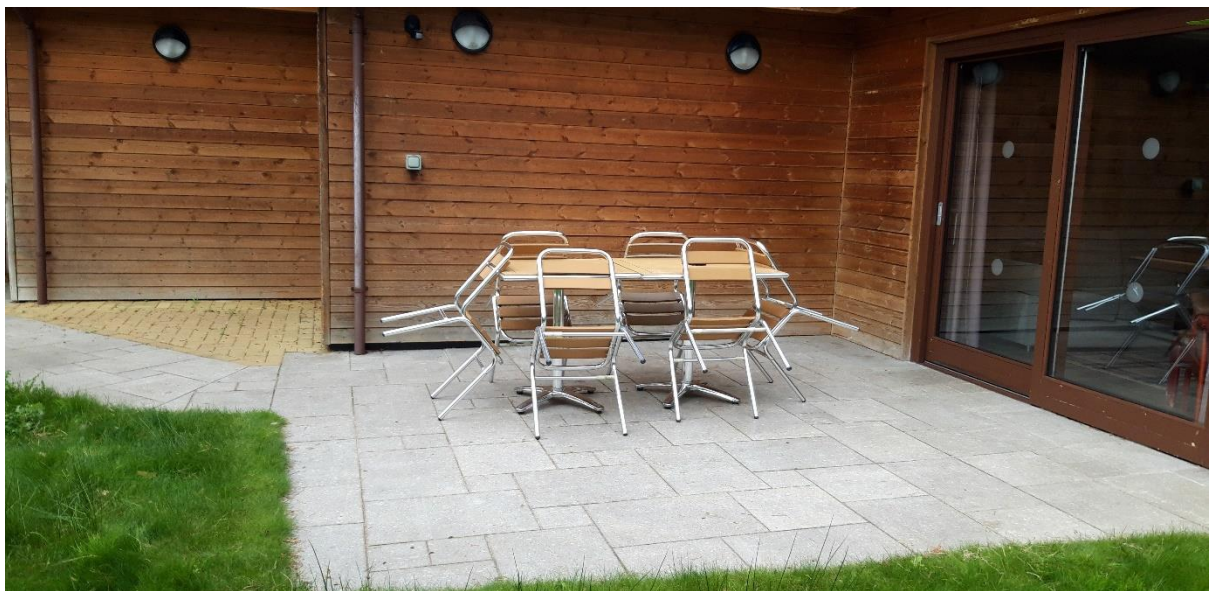
There is an external electrical charging point under the dining room window.

Parking - Designated accessible parking is provided by the accommodation. One space per lodge. This is to assist loading and unloading. You will still be required to remove your vehicle to the car park once you have loaded your vehicle or unloaded it. As all other guests are.

Access inside the lodge - There is access for guests using wheelchairs throughout the accommodation. This includes into the other bedroom, although there is limited manoeuvring space once in the non-adapted bedroom.

Lounge

There is a raised chair to aid transfer from a wheelchair in the lounge area. This chair is also high seated and firm. The gap between the sofa and the wall to access the lounge area is approx.82cm wide. There is level access to the patio via the patio door in the lounge area. The patio door has an 96cm opening. The patio door lip is 1.5mm.



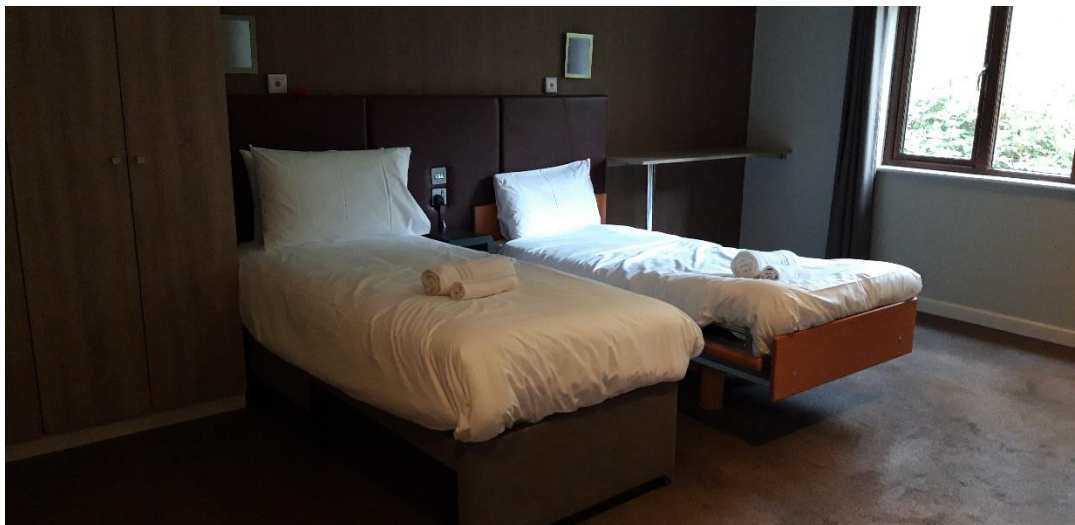
Accessible Bedroom

This is provided with one Bakare Volker 3082 adjustable 914mm x 1828mm (3ft) bed. There is space beneath the bed to allow a hoist to be used at the bedside. A portable hoist is not provided within the accommodation. The transfer is on the right-hand side.

The bedroom door opening is 88cm. There is a TV in this room. There is a table next to the bed which measures 145cm x 40cm. The table is 89cm from the floor. The emergency door width is 83cm. The chain height is 150cm.

The wardrobe has a lower rail on it. It is 143cm from the ground. The safe is in the master bedroom.

An emergency alarm pull cord is present. There is also one standard single bed in this room.



En-suite Adapted Bathroom

The accessible en-suite bathroom provides accessible shower seat, wash hand basin and toilet. The door opening is 88cm.

The toilet is a right hand transfer. The toilet seat height is 49cm. The toilet seat is blue to aid those with visual impairment. The

distance between the toilet and the sink is 45cm. The sink height is 67cm.

The distance between the sink and the shower door is 110cm. The shower seat is 47cm from the floor. The shower transfer is to the right-hand side. The shower head height can be adjusted. There is a shelf to allow toiletries to be placed on it. An emergency alarm pull cord is provided at the shower.



Kitchen

The width of the access to the kitchen is 93cm. The hob is located above the oven, height 91cm. The oven has a side opening door. There is a work surface at a height of 72cm. The microwave toaster and kettle are on this work surface to assist with access. There are sufficient floor-based cupboards to provide accessible storage. You may need to move what you decide is needed into these cupboards. However, there are also wall mounted cupboards which are not accessible from a wheelchair. The tap for the sink on the nearest side to the user. The fridge is at a low level. The kitchen as a whole is 180cm x 190cm.



Dining Room

The dining room is just off the lounge area. The chairs can be removed to allow access for a wheelchair user to eat at the table.

Adapted lodge 337

This is a Two bed single storey Executive lodge. The makeup of the non-adapted room is a double bed. The adapted bed room is made up of two single beds. There is a chain on the front door at 170cm from the floor. This is to prevent small children leaving the lodge without the guardian / parent's knowledge. The front door width is 83cm.

There are emergency pull cords in the adapted bed room and en-suite bath room these are local alarms and can be heard in the lodge they are not connected to a central point.

There are various paths around village which have steep inclines. Please see the Around the Village tab on Access for All for further information.

Parking - Designated accessible parking is provided by the accommodation. One space per lodge. This is to assist loading and unloading. You will still be required to remove your vehicle to the car park once you have loaded your vehicle or unloaded it. As all other guests are.

Access inside the lodge - There is access for guests using wheelchairs throughout the accommodation. This includes into the other bedroom, although there is limited manoeuvring space once in the non-adapted bedroom.

Lounge

There is a raised chair to aid transfer from a wheel chair in the lounge area. This chair is also high seated and firm. The gap between the sofa and the wall to access the lounge area is approx.135cm wide. There is level access to the patio via the patio door in the lounge area. The patio door has an 82cm opening. The patio door has a 2mm threshold.



Accessible Bedroom

This is provided with one Bakare Volker 3082 adjustable 914mm x 1828mm (3ft) bed. There is space beneath the bed to allow a hoist to be used at the bedside. A portable hoist is not provided within the accommodation. The bed transfer is on the left-hand side.

The bedroom door opening is 84cm. There is a TV in this room. There is a table next to the bed which measures 147cm x

40cm. The table is 87cm from the floor. The emergency door is 84cm wide. The chain is 152cm from the ground.

The wardrobe has a lower rail on it. It is 144cm from the ground.

An emergency alarm pull cord is present. There is also one standard single bed in this room.



En-suite Adapted Bathroom

The accessible en-suite bathroom provides accessible shower seat, wash hand basin and toilet.

The toilet is a left hand transfer. The toilet seat height is 46cm. The toilet seat is blue to aid those with visual impairment. The distance between the toilet and the sink is 45cm. The sink height is 68cm.

The distance between the sink and the shower door is 114cm. The shower transfer is to the left-hand side. The shower head height can be adjusted. An emergency alarm pull cord is provided at the shower.



Kitchen

The hob is located above the oven, height 90cm. The oven has a side opening door. There is a work surface at a height of 72cm. The microwave toaster and kettle are on this work surface to assist with access. There are sufficient floor based cupboards to provide accessible storage. You may need to move what you decide is needed into these cupboards. However there are also wall mounted cupboards which are not accessible from a wheelchair. The tap for the sink on the nearest side to the user. The fridge is at a low level. The kitchen as a whole is 190cm x 160cm.



Dining Room

The dining room is just off the lounge area. The chairs can be removed to allow access for a wheelchair user to eat at the table.

Adapted lodge 341

This is a Two bed single storey Executive dog lodge. The makeup of the non-adapted room is a double bed. The adapted bedroom is made up of two single beds. The front door width is 84cm. There is a chain on the front door at 176cm from the floor. This is to prevent small children leaving the lodge without the guardian / parent's knowledge.

There are emergency pull cords in the adapted bed room and en-suite bath room these are local alarms and can be heard in the lodge they are not connected to a central point. There is an external charging point by the dining room windows.

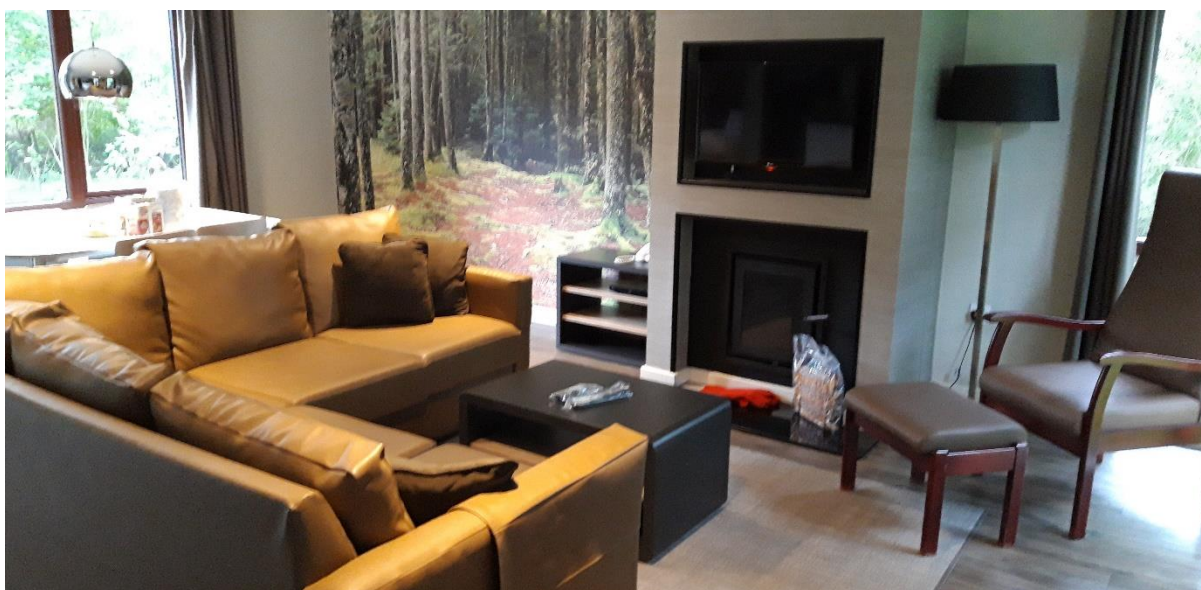
There are various paths around village which have steep inclines. Please see the Around the Village tab on Access for All for further information.

Parking - Designated accessible parking is provided by the accommodation. One space per lodge. This is to assist loading and unloading. You will still be required to remove your vehicle to the car park once you have loaded your vehicle or unloaded it. As all other guests are.

Access inside the lodge - There is access for guests using wheelchairs throughout the accommodation. This includes into the other bedroom, although there is limited manoeuvring space once in the non-adapted bedroom.

Lounge

There is a raised chair to aid transfer from a wheelchair in the lounge area. This chair is also high seated and firm. The gap between the sofa and the wall to access the lounge area is approx.140cm wide. There is level access to the patio via the patio door in the lounge area. The patio door has an 80cm opening. The lip of the patio door is 3mm.



Accessible Bedroom

This is provided with one Bakare Volker 3082 adjustable 914mm x 1828mm (3ft) bed. The bed is a right-hand transfer. There is space beneath the bed to allow a hoist to be used at the bedside. A portable hoist is not provided within the accommodation.

The bedroom door opening is 85cm. There is a TV in this room. There is a table next to the bed which measures 145cm x 40cm. The table is 88cm from the floor.

There is a second access door the bedroom. The opening is 82cm wide. The chain is 152cm from the ground.

The wardrobe has a lower rail on it. It is 146cm from the ground. The safe is in the master bedroom.

An emergency alarm pull cord is present. There is also one standard single bed in this room.

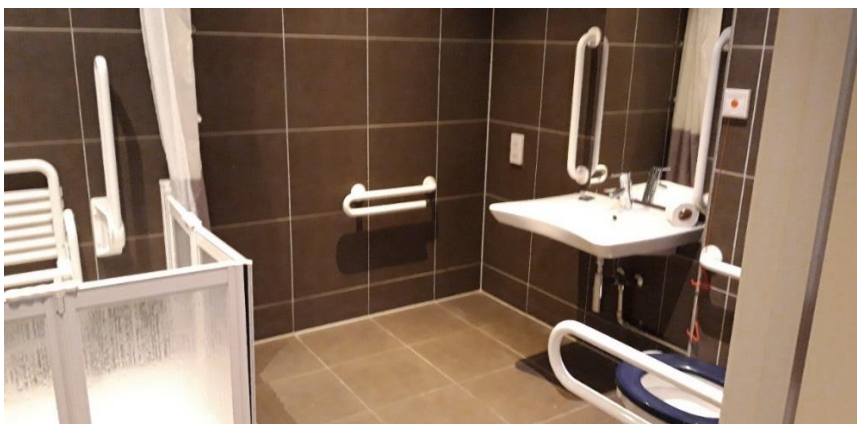


En-suite Adapted Bathroom

The accessible en-suite bathroom provides accessible shower seat, wash hand basin and toilet. The bathroom door opening is 85cm.

The toilet is a right-hand transfer. The toilet seat height is 49cm. The toilet seat is blue to aid those with visual impairment. The distance between the toilet and the sink is 50cm. The sink height is 67cm.

The distance between the sink and the shower door is 107cm. The shower transfer is to the right-hand side. The shower head height can be adjusted. There is a shelf to allow toiletries to be placed on it. An emergency alarm pull cord is provided at the shower.



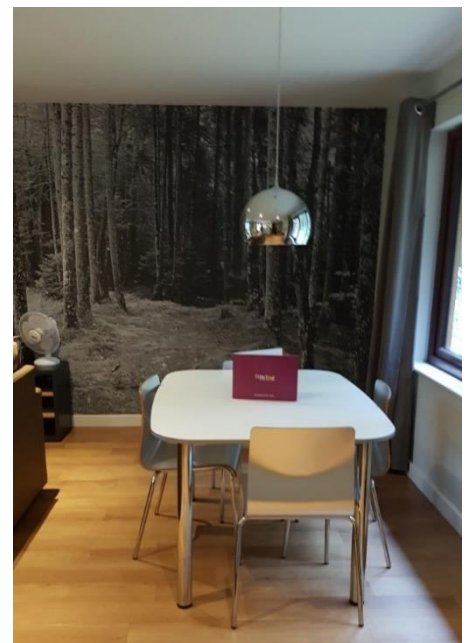
Kitchen

The hob is located above the oven, height 90cm. The oven has a side opening door. There is a work surface at a height of 72cm. The microwave toaster and kettle are on this work surface to assist with access. There are sufficient floor-based cupboards to provide accessible storage. You may need to move what you decide is needed into these cupboards. However, there are also wall mounted cupboards which are not accessible from a wheelchair. The tap for the sink on the nearest side to the user. The fridge is at a low level. The kitchen as a whole is 190cm x 160cm. The kitchen access width is 102cm.



Dining Room

The dining room is just off the lounge area. The chairs can be removed to allow access for a wheelchair user to eat at the table.



Adapted lodge 432

This is a Four Bed Split Level Executive lodge. The makeup of the non-adapted rooms are a double bedroom, and two twin bedrooms. The adapted bedroom is made up of two single beds. The front door width is 83cm. There is a chain on the front door at 176cm from the floor. This is to prevent small children leaving the lodge without the guardian / parent's knowledge.

The hallway is 174cm x 157cm. The doorway to the living area is 86cm.

There are emergency pull cords in the adapted bed room and en-suite bath room these are local alarms and can be heard in the lodge they are not connected to a central point.

There are various paths around village which have steep inclines. Please see the Around the Village tab on Access for All for further information.



Finishes Plan
0m 5m 10m 15m



Finishes Plan
0m 5m 10m 15m

Parking - Designated accessible parking is provided by the accommodation. One space per lodge. This is to assist loading and unloading. You will still be required to remove your vehicle to the car park once you have loaded your vehicle or unloaded it. As all other guests are.

Access inside the lodge - There is access for guests using wheelchairs throughout the accommodation. This includes into the other bedroom, although there is limited manoeuvring space once in the non-adapted bedroom.

Lounge

There is a raised chair to aid transfer from a wheelchair in the lounge area. This chair is also high seated and firm. The gap between the sofa and the wall to access the lounge area is approx. 100cm wide. The patio door opening is 96cm wide. There is level access to the patio via the patio door in the lounge area.





Accessible Bedroom

This is provided with one Bakare Volker 3082 adjustable 914mm x 1828mm (3ft) bed. The bed is a right-hand transfer. There is space beneath the bed to allow a hoist to be used at the bedside. A portable hoist is not provided within the accommodation.

The alternative door is 82cm wide.

The bedroom door opening is 87cm. There is a TV in this room. There is a table next to the bed which measures 40cm x 147cm. The table is 86cm from the floor.

The wardrobe has a lower shelf on it. It is 93cm from the ground.

An emergency alarm pull cord is present. There is also one standard single bed in this room.



En-suite Adapted Bathroom

The accessible en-suite bathroom provides accessible shower seat, wash hand basin and toilet. The bathroom door opening is 86cm wide.

The toilet is a right-hand transfer. The toilet seat height is 49cm. The toilet seat is blue to aid those with visual impairment. The distance between the toilet and the sink is 40cm. The sink height is 68cm.

The distance between the sink and the shower door is 102cm. The shower transfer is to the right-hand side. The shower head height can be adjusted. The shower seat height is 49cm. There is a shelf to allow toiletries to be placed on it. An emergency alarm pull cord is provided at the shower.



Kitchen

The hob is located above the oven, height 90cm. The oven has a side opening door. There is a work surface at a height of 72cm. The microwave toaster and kettle are on this work surface to assist with access. There are sufficient floor-based cupboards to provide accessible storage. You may need to move what you decide is needed into these cupboards. However, there are also wall mounted cupboards which are not accessible from a wheelchair. The tap for the sink on the nearest side to the user. The fridge is at a low level. The kitchen as a whole is 247cm x 180cm. The opening to gain access to the kitchen is 115cm.



Dining Room

The dining room is just off the lounge area. The chairs can be removed to allow access for a wheelchair user to eat at the table.

Sauna

The door opening to the sauna is 82cm. There is an external shower the on and off switch is 90cm from the ground. The sauna seats are 49cm from the ground. There is a turning circle 150cm x 90cm.



Games Room

The door width is 87cm. The pool table height is 77cm from the ground. The patio door opening from the games from is 97cm and the lip is 2mm.



Adapted lodge 439

This is a six Bed Woodland lodge. The makeup of the non-adapted rooms are 3 double bedrooms and two twins or 2 two double bedrooms and three twins. The adapted bedroom is made up of two single beds. The front door width is 83cm. There is a chain on the front door at 177cm from the floor. This is to prevent small children leaving the lodge without the guardian / parent's knowledge.

There are emergency pull cords in the adapted bedroom and en-suite bathroom these are local alarms and can be heard in the lodge they are not connected to a central point. The external charging point is by the adapted emergency door.

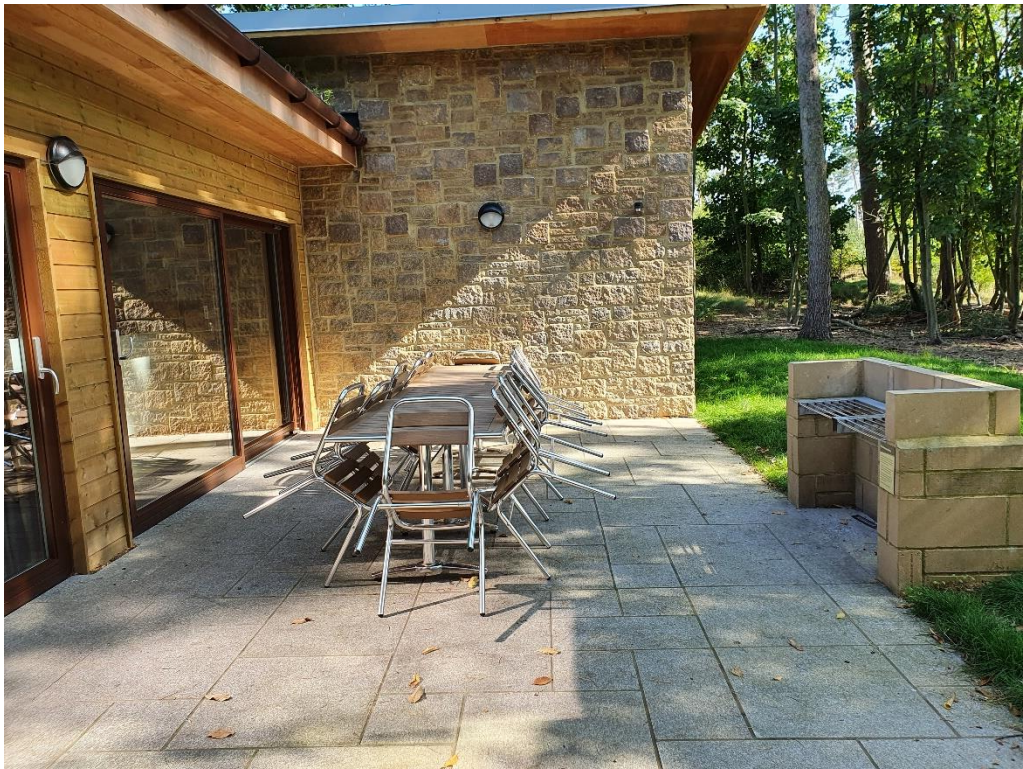
There are various paths around village which have steep inclines. Please see the Around the Village tab on Access for All for further information.

Parking - Designated accessible parking is provided by the accommodation. One space per lodge. This is to assist loading and unloading. You will still be required to remove your vehicle to the car park once you have loaded your vehicle or unloaded it. As all other guests are.

Access inside the lodge - There is access for guests using wheelchairs throughout the accommodation. This includes into the other bedroom, although there is limited manoeuvring space once in the non-adapted bedroom.

Lounge

There is a raised chair to aid transfer from a wheelchair in the lounge area. This chair is also high seated and firm. The gap between the sofa and the wall to access the lounge area is approx. 85cm wide. There is level access to the patio via the patio door in the lounge area. The patio door has an 149cm opening. The patio door lip is 1.5mm.





Accessible Bedroom

This is provided with one Bakare Volker 3082 adjustable 914mm x 1828mm (3ft) bed. There is space beneath the bed to allow a hoist to be used at the bedside. A portable hoist is not provided within the accommodation. The bed is a left-hand transfer.

The bedroom door opening is 90cm. The width of the emergency door is 80cm. The door chain is 170cm. There is not TV in this room (there is in the double room this is the as all other woodland lodges). There is a table next to the bed which measures 136cm x 30cm. The table is 70cm from the floor.

The wardrobe has a lower rail on it. It is 145cm from the ground. The safe is in the master bedroom.

An emergency alarm pull cord is present. There is also one standard single bed in this room.



En-suite Adapted Bathroom

The accessible en-suite bathroom provides accessible shower seat, wash hand basin and toilet. The door width is 89cm.

The toilet is a left-hand transfer. The toilet seat height is 49cm. The distance between the toilet and the sink is 40cm. The sink height is 65cm.

The distance between the sink and the shower door is 110cm. The shower transfer is to the left-hand side. The shower chair is 47cm from the floor. The shower head height can be adjusted. There is a shelf to allow toiletries to be placed on it. An emergency alarm pull cord is provided at the shower.



Kitchen

The hob is located above the oven, height 91cm. The oven has a side opening door. There is a work surface at a height of 72cm. The microwave and toaster are on this work surface to assist with access. There are sufficient floor-based cupboards to provide accessible storage. You may need to move what you decide is needed into these cupboards. However, there are also wall mounted cupboards which are not accessible from a wheelchair. The tap for the sink on the nearest side to the user. The fridge is at a low level. The kitchen as a whole is 410cm x 180cm.



Dining Room



The dining room is just off the lounge area. The chairs can be removed to allow access for a wheelchair user to eat at the table.

Adapted lodge 440

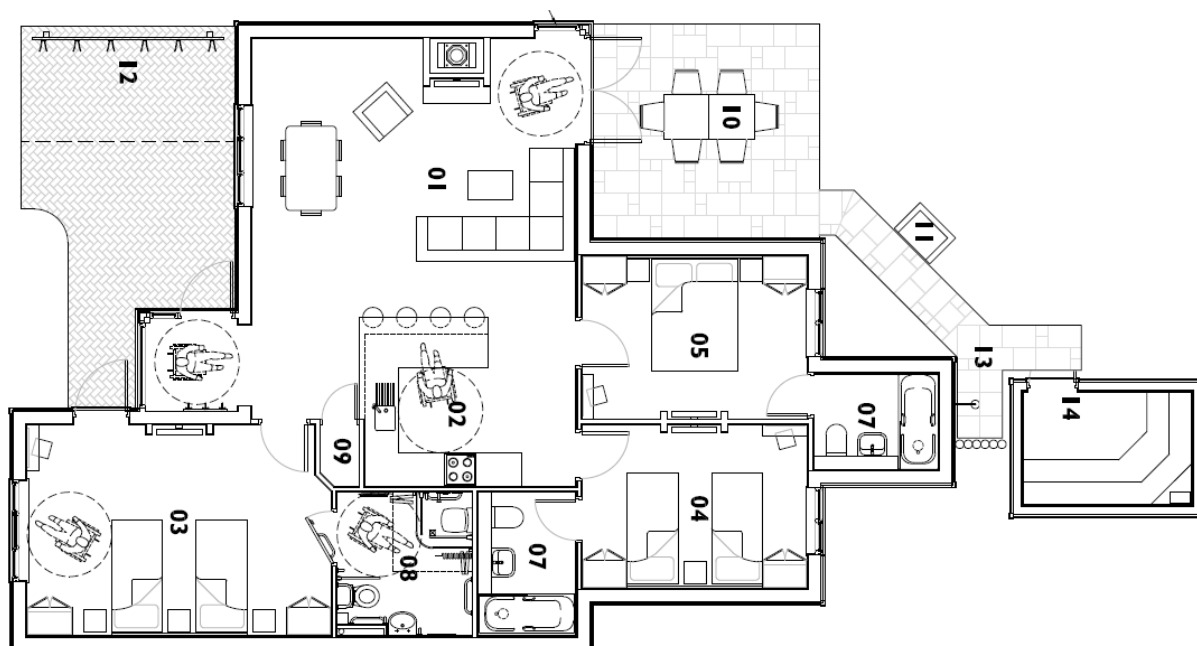
This is a three bed Executive lodge. The makeup of the non-adapted rooms are one double bedroom and one twin. The adapted bedroom is made up of two single beds. The front door width is 83cm There is a chain on the front door at 177cm from the floor. This is to prevent small children leaving the lodge without the guardian / parent's knowledge.

There are emergency pull cords in the adapted bed room and en-suite bath room these are local alarms and can be heard in the lodge they are not connected to a central point.

There are various paths around village which have steep inclines. Please see the Around the Village tab on Access for All for further information.

Parking - Designated accessible parking is provided by the accommodation. One space per lodge. This is to assist loading and unloading. You will still be required to remove your vehicle to the car park once you have loaded your vehicle or unloaded it. As all other guests are.

Access inside the lodge - There is access for guests using wheelchairs throughout the accommodation. This includes into the other bedroom, although there is limited manoeuvring space once in the non-adapted bedroom.



Lounge

There is a raised chair to aid transfer from a wheelchair in the lounge area. This chair is also high seated and firm. The gap between the sofa and the wall to access the lounge area is approx. 78cm wide. There is level access to the patio via the patio door in the lounge area. The patio door has an 92cm opening. The lip of the patio door opening is 2mm.



Accessible Bedroom

This is provided with one Bakare Volker 3082 adjustable 914mm x 1828mm (3ft) bed. There is space beneath the bed to allow a hoist to be used at the bedside. A portable hoist is not provided within the accommodation. Transfer is left hand side.

The bedroom door opening is 86cm. There is a TV in this room. There is a table next to the bed which measures 137cm x 30cm. The table is 70cm from the floor.

The wardrobe has a lower rail on it. It is 145cm from the ground.

An emergency alarm pull cord is present. There is also one standard single bed in this room. There is an emergency door the width is 82cm. Chain height on this door is 168cm from the ground.

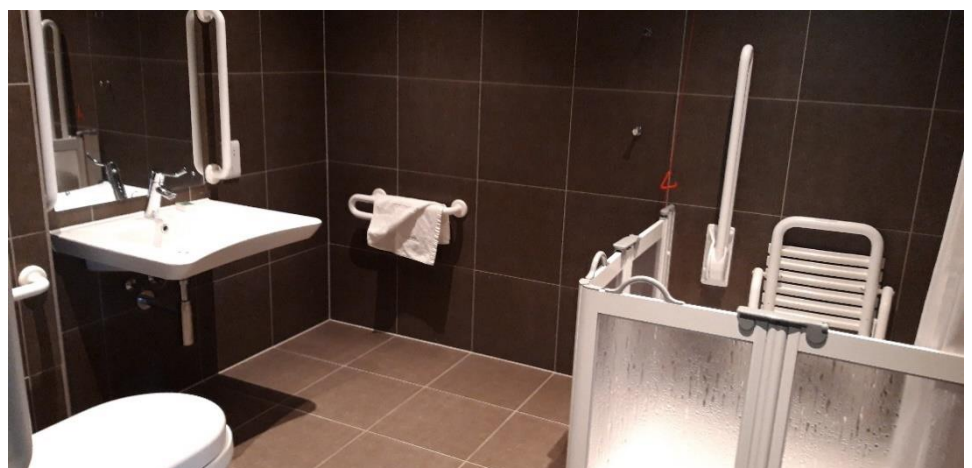


En-suite Adapted Bathroom

The accessible en-suite bathroom provides accessible shower seat, wash hand basin and toilet.

The toilet is a left-hand transfer. The toilet seat height is 48cm. The toilet seat is blue to aid those with visual impairment. The distance between the toilet and the sink is 50cm. The sink height is 66cm.

The distance between the sink and the shower door is 110cm. The shower chair height is 49cm. The shower transfer is to the left-hand side. The shower head height can be adjusted. There is a small shelf to allow toiletries to be placed on it. An emergency alarm pull cord is provided at the shower.



Kitchen

The hob is located above the oven, height 90cm. The oven has a side opening door. There is a work surface at a height of 72cm. The microwave and toaster are on this work surface to assist with access. There are sufficient floor-based cupboards to provide accessible storage. You may need to move what you decide is needed into these cupboards. However, there are also wall mounted cupboards which are not accessible from a wheelchair. The tap for the sink on the nearest side to the user. The fridge is at a low level. The kitchen as a whole is 150cm x 190cm.



Dining Room

The dining room is just off the lounge area. The chairs can be removed to allow access for a wheelchair user to eat at the table.



Sauna

The door width is 83cm. There is an emergency stop is in place and sounds locally. The seat height is 48cm. There is an external shower with the on off button at 95cm.



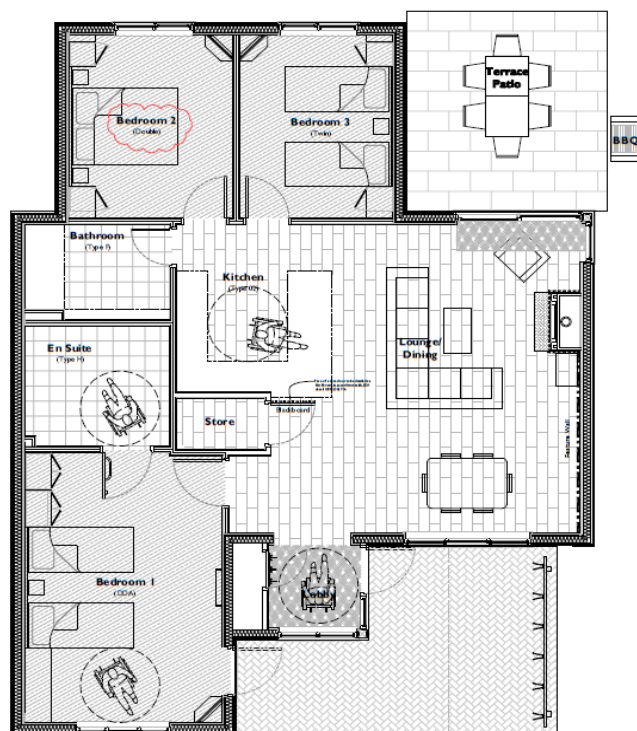
Adapted lodge 442

This is a three bed Executive lodge. The makeup of the non-adapted rooms is one double bedroom and one twin bedroom. The adapted bedroom is made up of two single beds.

The front door width is 82cm. There is a chain on the front door at 177cm from the floor. This is to prevent small children leaving the lodge without the guardian / parent's knowledge.

There are emergency pull cords in the adapted bed room and en-suite bath room these are local alarms and can be heard in the lodge they are not connected to a central point.

There are various paths around village which have steep inclines. Please see the Around the Village tab on Access for All for further information.



DDA Furniture & Finishes Plan

0m 0.5m 1m 2m 1:50 is A1

Parking - Designated accessible parking is provided by the accommodation. One space per lodge. This is to assist loading and unloading. You will still be required to remove your vehicle to the car park once you have loaded your vehicle or unloaded it. As all other guests are. There is a charging point externally by the alternative door in the adapted bedroom.

Access inside the lodge - There is access for guests using wheelchairs throughout the accommodation. This includes into the other bedroom, although there is limited manoeuvring space once in the non-adapted bedroom.

Lounge

There is a raised chair to aid transfer from a wheelchair in the lounge area. This chair is also high seated and firm. The gap between the sofa and the wall to access the lounge area is approx.100cm wide. There is level access to the patio via the patio door in the lounge area. The patio door has an 93cm opening. The patio lip is 2mm.



Accessible Bedroom

This is provided with one Bakare Volker 3082 adjustable 914mm x 1828mm (3ft) bed. There is space beneath the bed to allow a hoist to be used at the bedside. A portable hoist is not provided within the accommodation.

The bedroom door opening is 86cm. There is a TV in this room. There is a table next to the bed which measures 134cm x 30cm. The table is 70cm from the floor.

There is an alternative door is 80cm wide. The chain height is 160cm.

The wardrobe has a lower rail on it. It is 92cm from the ground. The safe is in the master bedroom.

An emergency alarm pull cord is present. There is also one standard single bed in this room.

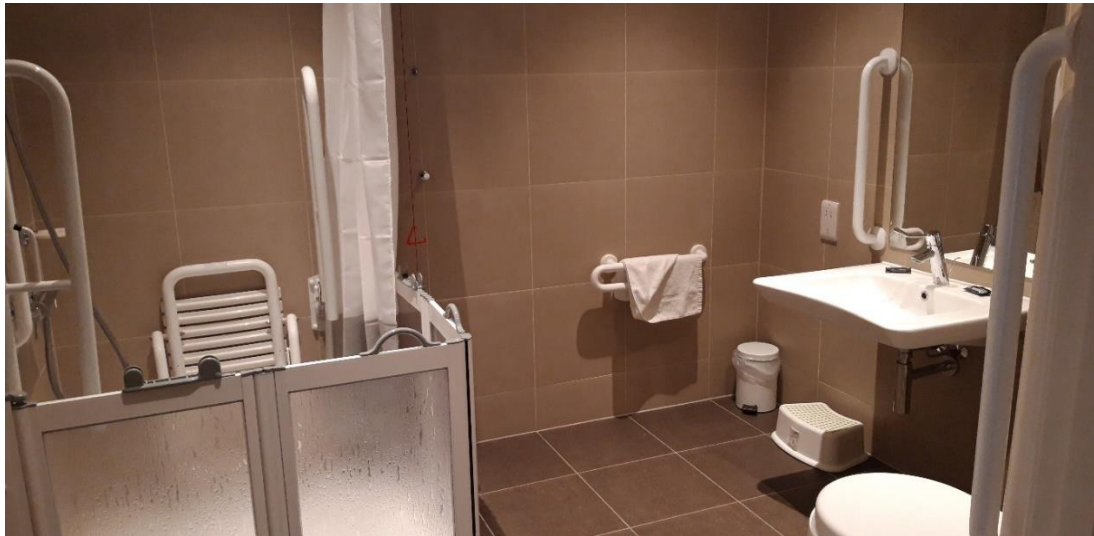


En-suite Adapted Bathroom

The accessible en-suite bathroom provides accessible shower seat, wash hand basin and toilet. The width of the door is 86cm.

The toilet is a right-hand transfer. The toilet seat height is 49cm. The distance between the toilet and the sink is 50cm. The sink height is 67cm.

The distance between the sink and the shower door is 104cm. The shower chair height is 49cm. The shower transfer is to the right-hand side. The shower head height can be adjusted. There is a shelf to allow toiletries to be placed on it. An emergency alarm pull cord is provided at the shower.



Kitchen

The hob is located above the oven, height 90cm. The oven has a side opening door. There is a work surface at a height of 72cm. The microwave and toaster are on this work surface to assist with access. There are sufficient floor-based cupboards to provide accessible storage. You may need to move what you decide is needed into these cupboards. However, there are also wall mounted cupboards which are not accessible from a wheelchair. The tap for the sink on the nearest side to the user. The fridge is at a low level. The kitchen as a whole is 190cm x 160cm.



Dining Room

The dining room is just off the lounge area. The chairs can be removed to allow access for a wheelchair user to eat at the table.



Adapted lodge 456

This is a three bed Executive lodge. The makeup of the non-adapted rooms are double beds. The adapted bedroom is made up of two single beds. The front door width is 84cm. There is a chain on the front door at 179cm from the floor. This is to prevent small children leaving the lodge without the guardian / parent's knowledge.

There are emergency pull cords in the adapted bed room and en-suite bath room these are local alarms and can be heard in the lodge they are not connected to a central point.

There are various paths around village which have steep inclines. Please see the Around the Village tab on Access for All for further information.

Parking - Designated accessible parking is provided by the accommodation. One space per lodge. This is to assist loading and unloading. You will still be required to remove your vehicle to the car park once you have loaded your vehicle or unloaded it. As all other guests are. There is an external charging point outside the dining room window.

Access inside the lodge - There is access for guests using wheelchairs throughout the accommodation. This includes into the other bedroom, although there is limited manoeuvring space once in the non-adapted bedroom.

Lounge

There is a raised chair to aid transfer from a wheelchair in the lounge area. This chair is also high seated and firm. The gap between the sofa and the wall to access the lounge area is approx. 90cm wide. There is level access to the patio via the patio door in the lounge area. The patio door has an 97cm opening. The lip of the patio door is 2mm.



Accessible Bedroom

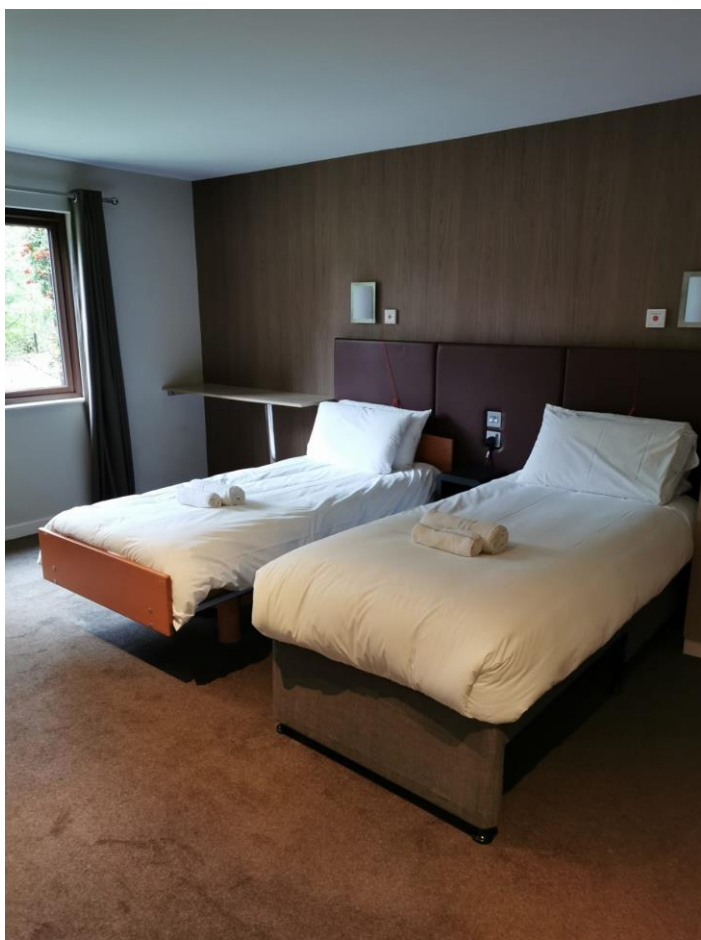
This is provided with one Bakare Volker 3082 adjustable 914mm x 1828mm (3ft) bed. There is space beneath the bed to allow a hoist to be used at the bedside. A portable hoist is not provided within the accommodation.

The bedroom door opening is 86cm. There is a TV in this room. There is a table next to the bed which measures 148cm x 40cm. The table is 86cm from the floor.

There is an alternative door to the adapted bedroom is 84cm wide. The chain height is 150cm from the floor.

The wardrobe has a rail it is 144cm from the ground.

An emergency alarm pull cord is present. There is also one standard single bed in this room.



En-suite Adapted Bathroom

The accessible en-suite bathroom provides accessible shower seat, wash hand basin and toilet. The bathroom door opening is 88cm.

The toilet is a left-hand transfer. The toilet seat height is 49cm. The toilet seat is blue to aid those with visual impairment. The distance between the toilet and the sink is 50cm. The sink height is 67cm.

The distance between the sink and the shower door is 110cm. The shower seat height is 43cm. The shower transfer is to the left-hand side. The shower head height can be adjusted. There is a shelf to allow toiletries to be placed on it. An emergency alarm pull cord is provided at the shower.



Kitchen

The hob is located above the oven, height of 90cm . The oven has a side opening door. There is a work surface at a height of 72cm. The microwave toaster and kettle are on this work surface to assist with access. There are sufficient floor based cupboards to provide accessible storage. You may need to move what you decide is needed into these cupboards. However there are also wall mounted cupboards which are not

accessible from a wheelchair. The tap for the sink on the nearest side to the user. The fridge is at a low level. The kitchen as a whole is 190cm x 160cm.



Dining Room

The dining room is just off the lounge area. The chairs can be removed to allow access for a wheelchair user to eat at the table.



Adapted Hotel Room 19

This is a Self-Catering one bed hotel room on the ground floor of the hotel. The front door width is 85cm. There are automatic doors that are triggered by your wrist bands.

There are emergency pull cords in the adapted bed room and shower room these can be heard in the hotel room and by the Aqua Sana staff who will attend to assist between the hours of 06:30 and 22:00.

The Hotel room is located in the Plaza building. There are various paths around village which have steep inclines. Please see the Around the Village tab on access for all for further information.

Parking - Designated accessible parking is provided in the hotel / main carpark.

Access inside the room - There is access for guests using wheelchairs throughout the accommodation.

Living Space

There is a TV on the wall with remote controls for operation. There are tea and coffee making facilities. There is a raised chair to aid transfer from a wheelchair in the lounge area.



Accessible Bedroom

This is provided with one Bakare Volker 3082 adjustable 914mm x 1828mm (3ft) bed. There is space beneath the bed to allow a hoist to be used at the bedside. A portable hoist is not provided within the accommodation. The bed is a left-hand transfer.

The wardrobe has a rail on it. It is 158cm from the ground. An emergency alarm pull cord is present. There is also one standard single bed in this room.



Balcony

The balcony door is 97cm wide. The balcony is 320cm x 130cm. The lip to the balcony is 2mm.



En-suite Adapted Bathroom

The accessible en-suite bathroom provides accessible shower seat, wash hand basin and toilet.

The toilet is a left hand transfer. The toilet seat height is 48cm. The distance between the toilet and the sink is 40cm. The sink height is 57cm.

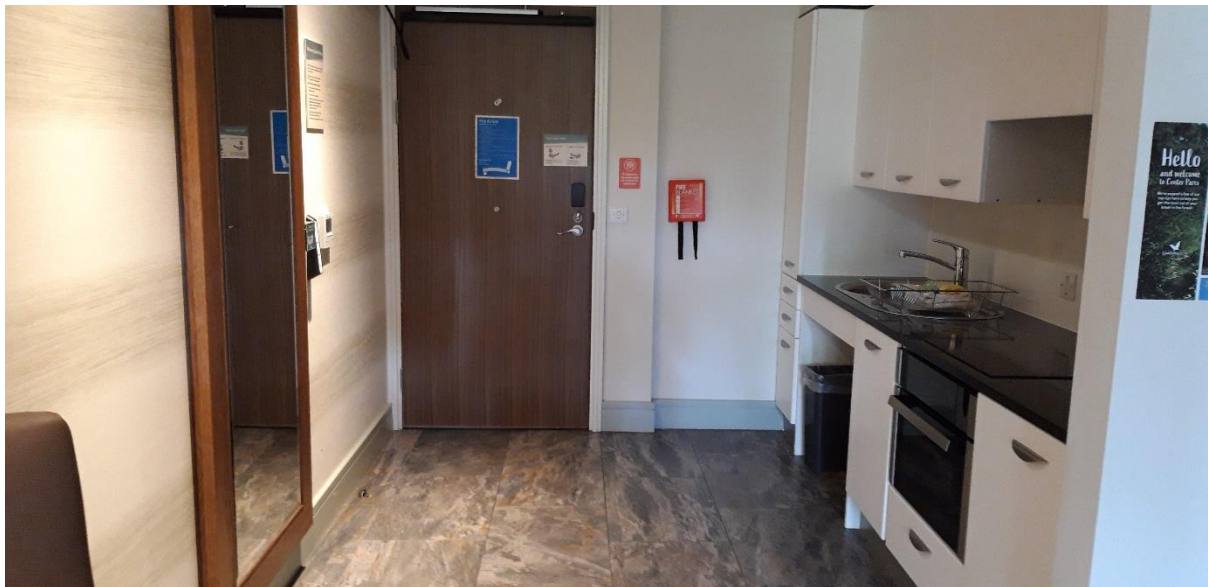
The shower transfer is to the left-hand side. The shower head height can be adjusted. An emergency alarm pull cord is provided at the shower.



Kitchen

The hob is located above the oven, height 87cm. The oven has a top opening door. There is a work surface at a height of 96cm. The microwave toaster and kettle are on this work surface to assist with access. There are sufficient floor based cupboards to provide accessible storage. You may need to move what you decide is needed into these cupboards.

However there are also wall mounted cupboards which are not accessible from a wheelchair. The tap for the sink is on the far side to the user. The fridge is at a low level. The kitchen as a whole is 193cm x 240cm.



Adapted Hotel Room 69

This is a one bed hotel room on the third floor of the hotel. The front door width is 84cm. There are automatic doors that are triggered by your wrist bands.

There are emergency pull cords in the adapted bed room and shower room these can be heard in the hotel room and by the aqua sana staff who will attend to assist between the hours of 0630 and 2300.

The Hotel room is located in the Plaza building. There are various paths around village which have steep inclines. Please see the Around the Village tab on access for all for further information.

Parking - Designated accessible parking is provided in the hotel carpark.

Access inside the room - There is access for guests using wheelchairs throughout the accommodation.

Tea and coffee facilities / Living space

There is a fridge on the ground level. The unit high is 90cm.



Accessible Bedroom

This is provided with one Bakare Volker 3082 adjustable 914mm x 1828mm (3ft) bed. There is space beneath the bed to allow a hoist to be used at the bedside. A portable hoist is not provided within the accommodation. The bed left hand transfer.

The wardrobe has a lower rail on it. It is 120cm from the ground. An emergency alarm pull cord is present. There is also one standard single bed in this room.



Balcony

The balcony is 360cm x 160cm. The balcony door opening is 65cm. The lip to the balcony is 1.5mm.

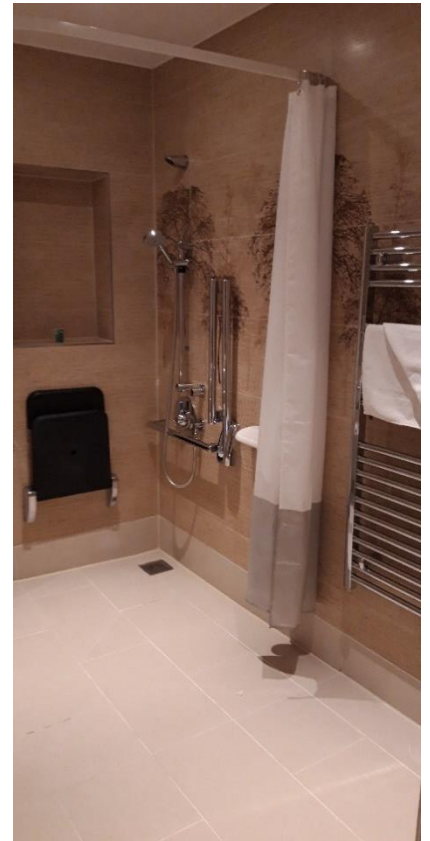


En-suite Adapted Bathroom

The accessible en-suite bathroom provides accessible shower seat, wash hand basin and toilet.

The toilet is a left hand transfer. The toilet seat height is 48cm. The distance between the toilet and the sink is 40cm. The sink height is 68cm.

The distance between the sink and the shower curtain is 90cm. The shower transfer is to the right-hand side. The shower seat height is 45cm. The shower head height can be adjusted. There is a shelf to allow toiletries to be placed on it. An emergency alarm pull cord is provided at the shower.



Adapted Tree House 482

This is a four bedroom Tree House. The makeup of the non-adapted rooms is either two double beds and one twin or two twin and one double. The adapted bedroom is made up of two single beds.

The front door width is 83cm. There is a chain on the front door at 180cm from the floor. This is to prevent small children leaving the lodge without the guardian / parent's knowledge.

There are emergency pull cords in the adapted bedroom and en-suite bathroom these are local alarms and can be heard in the lodge they are not connected to a central point.

There is alternative access and egress to the Tree House via a ramp the width of the ramp is 110cm. There is an external socket on the tree house balcony.

There are various paths around village which have steep inclines. Please see the Around the Village tab on Access for All for further information.

Parking - Designated accessible parking is provided by the accommodation. Two spaces per lodge. This is to assist loading and unloading. You will still be required to remove your vehicle to the car park once you have loaded your vehicle or unloaded it. As all other guests are.

Access inside the lodge - There is access for guests using wheelchairs throughout the accommodation. This includes into the other bedrooms, although there is limited manoeuvring space once in the non-adapted bedrooms. The master bedroom is at the top of a spiral staircase.

Lounge

There is a raised chair to aid transfer from a wheelchair in the lounge area. This chair is also high seated and firm. There is level access to the patio via the patio door in the lounge area. The patio door has an 81cm opening. With a lip of 4mm.



Accessible Bedroom

This is provided with one Bakare Volker 3082 adjustable 914mm x 1828mm (3ft) bed. There is space beneath the bed to allow a hoist to be used at the bedside. A portable hoist is not provided within the accommodation. The bed is a right-hand transfer.

The bedroom door opening is 86cm. There is a TV in this room. The safe is in the bottom of the wardrobe. The turning circle to the bed is approx. 103cm x 150cm. There is a dressing table which measures 118cm x 58cm. The table is 61cm from the floor.

The wardrobe rail is 170cm from the ground.

There is a patio door leading to the outside space. The door width is 80cm. The patio door width is 2mm.

An emergency alarm pull cord is present. There is also one standard single bed in this room.



En-suite Adapted Bathroom

The accessible en-suite bathroom provides accessible shower seat, wash hand basin and toilet.

The toilet is a left-hand transfer. The toilet seat height is 49cm. The distance between the toilet and the sink is 50cm. The sink height is 57cm.

The distance between the sink and the shower door is 104cm. The shower transfer is to the left-hand side. The shower seat height is 49cm. The shower head height can be adjusted.

There is a shelf to allow toiletries to be placed on it. An emergency alarm pull cord is provided at the shower.



Kitchen

The hob is located above the oven, height is 91cm. The oven has a side opening door. There is a work surface at a height of 74cm. The microwave is on this work surface to assist with access. There are sufficient floor-based cupboards to provide accessible storage. You may need to move what you decide is needed into these cupboards.



However, there are also wall mounted cupboards which are not accessible from a wheelchair. The kitchen as a whole is 170cm x 230cm.

Games Room

The games room door width is 80cm. The lip of the doorway is 3mm. The distance between the sofa and the drinks cupboard is 110cm. The back of the sofa to the pool table is 57cm. The pool table is 78cm.



Infrared Sauna

The door width for this room is 80cm. There is room by the door to put a wheelchair and if needed to transfer on to the seating. It is a right-hand transfer. The seat height is 57cm. There is an emergency pull cord which sounds locally inside the tree house.



Hot Tub

There are two steps that can be used for access. Alternatively, there is a hoist (Oxford Dipper). The average temperature for the hot tub is 37degrees Celsius.



Dining Room

The dining room is just off the lounge area. The chairs can be removed to allow access for a wheelchair user to eat at the table.

